

## HDAC3 Polyclonal Antibody

### Description

<b>Product type</b>	Primary Antibody
<b>Code</b>	BT-AP03922
<b>Host</b>	Rabbit
<b>Isotype</b>	IgG
<b>Size</b>	20ul, 50ul, 100ul
<b>Immunogen</b>	The antiserum was produced against synthesized peptide derived from human HDAC3. AA range:379-428
<b>Mol wt</b>	48848
<b>Species reactivity</b>	Human, Mouse, Rat
<b>Clonality</b>	Polyclonal
<b>Recommended application</b>	WB, IHC-p, IF, ELISA
<b>Concentration</b>	1 mg/ml
<b>Full name</b>	HDAC3 Antibody
<b>Synonyms</b>	HDAC3; Histone deacetylase 3; HD3; RPD3-2; SMAP45

**This product is for research use only, not for use in human, therapeutic or diagnostic procedure.**

### Background

Histones play a critical role in transcriptional regulation, cell cycle progression, and developmental events. Histone acetylation/deacetylation alters chromosome structure and affects transcription factor access to DNA. Histone deacetylase 3 encoded by HDAC3 belongs to the histone deacetylase/acuc/apha family. It has histone deacetylase activity and represses transcription when tethered to a promoter. It may participate in the regulation of transcription through its binding with the zinc-finger transcription factor YY1. This protein can also down-regulate p53 function and thus modulate cell growth and apoptosis. HDAC3 is regarded as a potential tumor suppressor gene.

### Recommended Dilution

WB: 1: 500 - 1: 2000

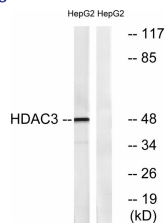
IHC: 1: 100 - 1: 300

IF: 1: 200 - 1: 1000

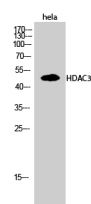
ELISA: 1: 5000

Not yet tested in other applications.

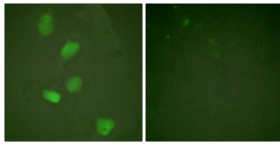
### Images



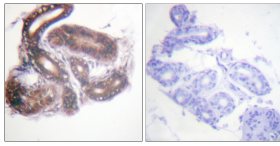
Western blot analysis of lysates from HepG2 cells, using HDAC3 Antibody. The lane on the right is blocked with the synthesized peptide.



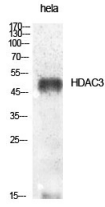
Western Blot analysis of hela cells using HDAC3 Polyclonal Antibody diluted at 1:1000



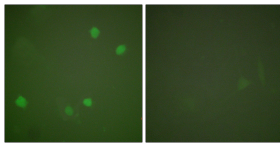
Immunofluorescence analysis of HeLa cells, using HDAC3 Antibody. The picture on the right is blocked with the synthesized peptide.



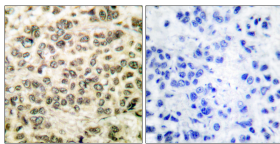
Immunohistochemistry analysis of paraffin-embedded human skin tissue, using HDAC3 Antibody. The picture on the right is blocked with the synthesized peptide.



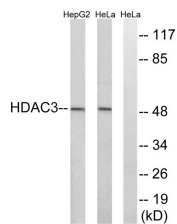
Western Blot analysis of various cells using HDAC3 Polyclonal Antibody diluted at 1:1000



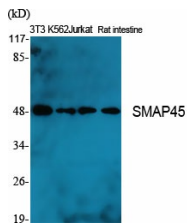
Immunofluorescence analysis of COS7 cells, using HDAC3 Antibody. The picture on the right is blocked with the synthesized peptide.



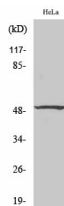
Immunohistochemistry analysis of paraffin-embedded human breast carcinoma tissue, using HDAC3 Antibody. The picture on the right is blocked with the synthesized peptide.



Western blot analysis of lysates from HepG2 and HeLa cells, using HDAC3 Antibody. The lane on the right is blocked with the synthesized peptide.



Western Blot analysis of various cells using SMAP45 Polyclonal Antibody diluted at 1:2000



Western Blot analysis of HepG2 cells using SMAP45 Polyclonal Antibody diluted at 1:2000

## Storage

-20°C for one year

501 Changsheng S Rd, Nanhu Dist, Jiaxing, Zhejiang, China

Tel: 86 21 31007137 | E-mail: [save@bt-laboratory.com](mailto:save@bt-laboratory.com) | [www.bt-laboratory.com](http://www.bt-laboratory.com)