

HDAC5/9 Polyclonal Antibody

Description

Product type	Primary Antibody
Code	BT-AP03925
Host	Rabbit
Isotype	IgG
Size	20ul, 50ul, 100ul
Immunogen	The antiserum was produced against synthesized peptide derived from human HDAC5. AA range:225-274
Mol wt	121992
Species reactivity	Human, Mouse
Clonality	Polyclonal
Recommended application	WB, IHC-p, ELISA
Concentration	1 mg/ml
Full name	HDAC5/9 Antibody
Synonyms	HDAC5; KIAA0600; Histone deacetylase 5; HD5; Antigen NY-CO-9; HDAC9; HDAC7; HDAC7B; HDRP; KIAA0744; MITR; Histone deacetylase 9; HD9; Histone deacetylase 7B; HD7; HD7b; Histone deacetylase-related pro

This product is for research use only, not for use in human, therapeutic or diagnostic procedure.

Background

Histones play a critical role in transcriptional regulation, cell cycle progression, and developmental events. Histone acetylation/deacetylation alters chromosome structure and affects transcription factor access to DNA. Histone deacetylase 5 encoded by HDAC5 belongs to the class II histone deacetylase/acuc/alpha family. It possesses histone deacetylase activity and represses transcription when tethered to a promoter. It coimmunoprecipitates only with HDAC3 family member and might form multicomplex proteins. It also interacts with myocyte enhancer factor-2 (MEF2) proteins, resulting in repression of MEF2-dependent genes. HDAC5 is thought to be associated with colon cancer. Two transcript variants encoding different isoforms have been found for HDAC5.

Recommended Dilution

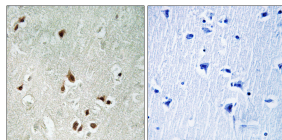
WB: 1: 500 - 1: 2000

IHC: 1: 100 - 1: 300

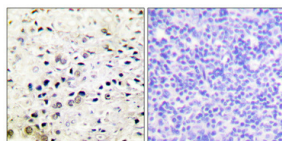
ELISA: 1: 5000

Not yet tested in other applications.

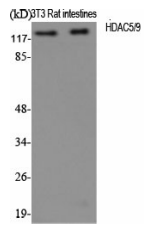
Images



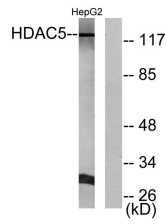
Immunohistochemistry analysis of paraffin-embedded human brain tissue, using HDAC5 Antibody. The picture on the right is blocked with the synthesized peptide.



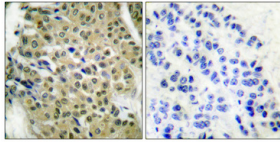
Immunohistochemical analysis of paraffin-embedded Human prostate cancer. Antibody was diluted at 1:100(4° overnight). High-pressure and temperature Tris-EDTA,pH8.0 was used for antigen retrieval. Negative contrl (right) obtained from antibody was pre-absorbed by immunogen peptide.



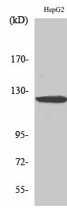
Western Blot analysis of various cells using HDAC5/9 Polyclonal Antibody diluted at 1:1000



Western blot analysis of lysates from HepG2 cells, using HDAC5 Antibody. The lane on the right is blocked with the synthesized peptide.



Immunohistochemical analysis of paraffin-embedded Human breast cancer. Antibody was diluted at 1:100(4° overnight). High-pressure and temperature Tris-EDTA,pH8.0 was used for antigen retrieval. Negative contrl (right) obtained from antibody was pre-absorbed by immunogen peptide.



Western Blot analysis of HepG2 cells using HDAC5/9 Polyclonal Antibody diluted at 1:1000

Storage

-20°C for one year

501 Changsheng S Rd, Nanhu Dist, Jiaxing, Zhejiang, China

Tel: 86 21 31007137 | E-mail: save@bt-laboratory.com | www.bt-laboratory.com