

HDAC8 Polyclonal Antibody

Description

Product type	Primary Antibody
Code	BT-AP03928
Host	Rabbit
Isotype	IgG
Size	20ul, 50ul, 100ul
Immunogen	The antiserum was produced against synthesized peptide derived from human HDAC8. AA range:5-54
Mol wt	41758
Species reactivity	Human, Mouse, Rat, Monkey
Clonality	Polyclonal
Recommended application	WB, IHC-p, ELISA
Concentration	1 mg/ml
Full name	HDAC8 Antibody
Synonyms	HDAC8; HDACL1; CDA07; Histone deacetylase 8; HD8

This product is for research use only, not for use in human, therapeutic or diagnostic procedure.

Background

Histones play a critical role in transcriptional regulation, cell cycle progression, and developmental events. Histone acetylation/deacetylation alters chromosome structure and affects transcription factor access to DNA. Histone deacetylase 8 encoded by HDAC8 belongs to class I of the histone deacetylase family. It catalyzes the deacetylation of lysine residues in the histone N-terminal tails and represses transcription in large multiprotein complexes with transcriptional co-repressors. Multiple transcript variants encoding different isoforms have been found for HDAC8.

Recommended Dilution

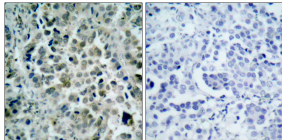
WB: 1: 500 - 1: 2000

IHC: 1: 100 - 1: 300

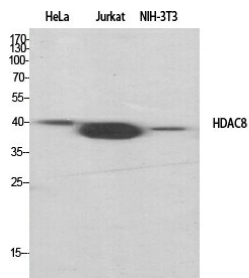
ELISA: 1: 20000

Not yet tested in other applications.

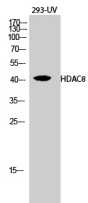
Images



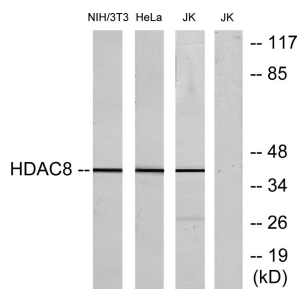
Immunohistochemistry analysis of paraffin-embedded human lung carcinoma tissue, using HDAC8 Antibody. The picture on the right is blocked with the synthesized peptide.



Western Blot analysis of various cells using HDAC8 Polyclonal Antibody diluted at 1:1000



Western Blot analysis of 293-UV cells using HDAC8 Polyclonal Antibody diluted at 1:1000



Western blot analysis of lysates from NIH/3T3, HeLa, and Jurkat cells, using HDAC8 Antibody.

The lane on the right is blocked with the synthesized peptide.

Storage

-20°C for one year

501 Changsheng S Rd, Nanhu Dist, Jiaxing, Zhejiang, China

Tel: 86 21 31007137 | E-mail: save@bt-laboratory.com | www.bt-laboratory.com