

HEI10 Polyclonal Antibody

Description

Product type	Primary Antibody
Code	BT-AP03936
Host	Rabbit
Isotype	IgG
Size	20ul, 50ul, 100ul
Immunogen	The antiserum was produced against synthesized peptide derived from human CCNB1IP1. AA range:201-250
Mol wt	31544
Species reactivity	Human
Clonality	Polyclonal
Recommended application	WB, IHC-p, ELISA
Concentration	1 mg/ml
Full name	HEI10 Antibody
Synonyms	CCNB1IP1; C14orf18; HEI10; E3 ubiquitin-protein ligase CCNB1IP1; Cyclin-B1-interacting protein 1; Human enhancer of invasion 10

This product is for research use only, not for use in human, therapeutic or diagnostic procedure.

Background

E3 ubiquitin-protein ligase CCNB1IP1 is a member of the E3 ubiquitin ligase family and functions in progression of the cell cycle through G(2)/M.

Recommended Dilution

WB: 1: 500 - 1: 2000

IHC: 1: 100 - 1: 300

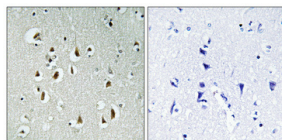
ELISA: 1: 40000

Not yet tested in other applications.

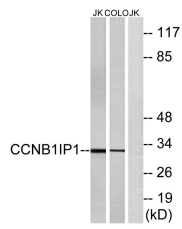
Images



Western Blot analysis of various cells using HEI10 Polyclonal Antibody diluted at 1:2000 cells nucleus.



Immunohistochemical analysis of paraffin-embedded Human brain. Antibody was diluted at 1:100(4° overnight). High-pressure and temperature Tris-EDTA,pH8.0 was used for antigen retrieval. Negative contrl (right) obtained from antibody was pre-absorbed by immunogen peptide.



Western blot analysis of lysates from Jurkat and COLO cells, using CCNB1IP1 Antibody. The lane on the right is blocked with the synthesized peptide.

Storage

-20°C for one year

501 Changsheng S Rd, Nanhu Dist, Jiaxing, Zhejiang, China

Tel: 86 21 31007137 | E-mail: save@bt-laboratory.com | www.bt-laboratory.com