

Hepatic Lipase Polyclonal Antibody

Description

Product type	Primary Antibody
Code	BT-AP03942
Host	Rabbit
Isotype	IgG
Size	20ul, 50ul, 100ul
Immunogen	The antiserum was produced against synthesized peptide derived from human LIPC. AA range:301-350
Mol wt	55880
Species reactivity	Human
Clonality	Polyclonal
Recommended application	WB, IHC-p, ELISA
Concentration	1 mg/ml
Full name	Hepatic Lipase Antibody
Synonyms	LIPC; HTGL; Hepatic triacylglycerol lipase; HL; Hepatic lipase; Lipase member C

This product is for research use only, not for use in human, therapeutic or diagnostic procedure.

Background

LIPC encodes hepatic triglyceride lipase, which is expressed in liver. LIPC has the dual functions of triglyceride hydrolase and ligand/bridging factor for receptor-mediated lipoprotein uptake.

Recommended Dilution

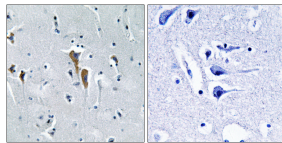
WB: 1: 500 - 1: 2000

IHC: 1: 100 - 1: 300

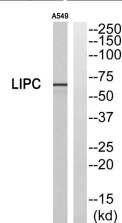
ELISA: 1: 10000

Not yet tested in other applications.

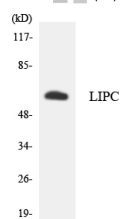
Images



Immunohistochemistry analysis of paraffin-embedded human brain, using LIPC Antibody. The lane on the right is blocked with the LIPC peptide.

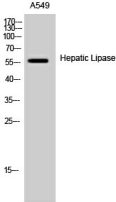


Western blot analysis of LIPC Antibody. The lane on the right is blocked with the LIPC peptide.



Western blot analysis of the lysates from HT-29 cells using LIPC antibody.

Western Blot analysis of A549 cells using Hepatic Lipase Polyclonal Antibody



Storage

-20°C for one year

501 Changsheng S Rd, Nanhu Dist, Jiaxing, Zhejiang, China
Tel: 86 21 31007137 | E-mail: save@bt-laboratory.com | www.bt-laboratory.com