

OTC Rabbit Polyclonal Antibody

Description

Product type	Primary Antibody
Code	BT-AP03955
Host	Rabbit
Isotype	IgG
Size	100ul, 50ul, 20ul
Immunogen	Synthesized peptide derived from human OTC
Mol wt	N/A
Species reactivity	Human, Mouse, Rat
Clonality	Polyclonal
Recommended application	WB
Concentration	1 mg/ml
Full name	OTC
Synonyms	OTC; Ornithine carbamoyltransferase; mitochondrial; EC 2.1.3.3; Ornithine transcarbamylase; OTCase

This product is for research use only, not for use in human, therapeutic or diagnostic procedure.

Background

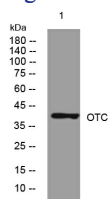
This nuclear gene encodes a mitochondrial matrix enzyme. Missense| nonsense| and frameshift mutations in this enzyme lead to ornithine transcarbamylase deficiency| which causes hyperammonemia. Since the gene for this enzyme maps close to that for Duchenne muscular dystrophy| it may play a role in that disease also.

Recommended Dilution

WB: 1: 500 - 1: 2000

Not yet tested in other applications.

Images



Western blot analysis of lysates from U2OS cells, primary antibody was diluted at 1:1000, 4°C overnight

Storage

-20°C for 1 year

501 Changsheng S Rd, Nanhu Dist, Jiaxing, Zhejiang, China

Tel: 86 21 31007137 | E-mail: save@bt-laboratory.com | www.bt-laboratory.com