

OTOGL Rabbit Polyclonal Antibody

Description

Product type	Primary Antibody
Code	BT-AP03958
Host	Rabbit
Isotype	IgG
Size	100ul, 50ul, 20ul
Immunogen	Synthesized peptide derived from human OTOGL
Mol wt	77990
Species reactivity	Human, Rat, Mouse
Clonality	Polyclonal
Recommended application	WB
Concentration	1 mg/ml
Full name	OTOGL
Synonyms	OTOGL

This product is for research use only, not for use in human, therapeutic or diagnostic procedure.

Background

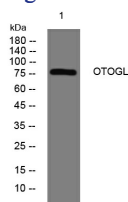
The protein encoded by this gene belongs to the otogelin family. This gene is expressed in the inner ear of vertebrates with the highest level of expression seen at the embryonic stage and lowest in adult. Knockdown studies in zebrafish suggest that this gene is essential for normal inner ear function. Mutations in this gene are associated with autosomal recessive deafness.

Recommended Dilution

WB: 1: 500 - 1: 2000

Not yet tested in other applications.

Images



Western blot analysis of lysates from PC-12 cells, primary antibody was diluted at 1:1000, 4°C overnight

Storage

-20°C for 1 year

501 Changsheng S Rd, Nanhu Dist, Jiaxing, Zhejiang, China

Tel: 86 21 31007137 | E-mail: save@bt-laboratory.com | www.bt-laboratory.com