

## HIPK4 Polyclonal Antibody

### Description

<b>Product type</b>	Primary Antibody
<b>Code</b>	BT-AP03976
<b>Host</b>	Rabbit
<b>Isotype</b>	IgG
<b>Size</b>	20ul, 50ul, 100ul
<b>Immunogen</b>	The antiserum was produced against synthesized peptide derived from human HIPK4. AA range:511-560
<b>Mol wt</b>	69425
<b>Species reactivity</b>	Human, Mouse, Rat
<b>Clonality</b>	Polyclonal
<b>Recommended application</b>	WB, IHC-p, IF, ELISA
<b>Concentration</b>	1 mg/ml
<b>Full name</b>	HIPK4 Antibody
<b>Synonyms</b>	HIPK4; Homeodomain-interacting protein kinase 4

**This product is for research use only, not for use in human, therapeutic or diagnostic procedure.**

### Background

HIPK4 encodes a member of the homeodomain interacting protein kinase (HIPK) family of proteins. While other members of this family are found throughout vertebrates, this member is present only in mammals. Compared to other members of this family, Homeodomain-interacting protein kinase 4 lacks a nuclear localization signal and a C-terminal autoinhibitory domain. Homeodomain-interacting protein kinase 4 exhibits kinase activity and may phosphorylate the tumor suppressor protein p53.

### Recommended Dilution

WB: 1: 500 - 1: 2000

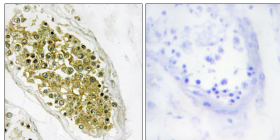
IHC: 1: 100 - 1: 300

IF: 1: 200 - 1: 1000

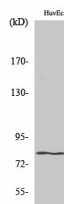
ELISA: 1: 20000

Not yet tested in other applications.

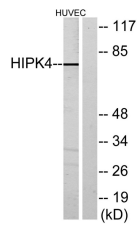
### Images



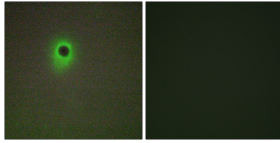
Immunohistochemistry analysis of paraffin-embedded human testis tissue, using HIPK4 Antibody. The picture on the right is blocked with the synthesized peptide.



Western Blot analysis of various cells using HIPK4 Polyclonal Antibody



Western blot analysis of lysates from HUVEC cells, using HIPK4 Antibody. The lane on the right is blocked with the synthesized peptide.



Immunofluorescence analysis of A549 cells, using HIPK4 Antibody. The picture on the right is blocked with the synthesized peptide.

### Storage

-20°C for one year

501 Changsheng S Rd, Nanhu Dist, Jiaxing, Zhejiang, China

Tel: 86 21 31007137 | E-mail: [save@bt-laboratory.com](mailto:save@bt-laboratory.com) | [www.bt-laboratory.com](http://www.bt-laboratory.com)