

## HisRS Polyclonal Antibody

### Description

<b>Product type</b>	Primary Antibody
<b>Code</b>	BT-AP03978
<b>Host</b>	Rabbit
<b>Isotype</b>	IgG
<b>Size</b>	20ul, 50ul, 100ul
<b>Immunogen</b>	The antiserum was produced against synthesized peptide derived from human HARS. AA range:460-509
<b>Mol wt</b>	57411
<b>Species reactivity</b>	Human, Mouse
<b>Clonality</b>	Polyclonal
<b>Recommended application</b>	WB, IHC-p, IF, ELISA
<b>Concentration</b>	1 mg/ml
<b>Full name</b>	HisRS Antibody
<b>Synonyms</b>	HARS; HRS; Histidine--tRNA ligase; cytoplasmic; Histidyl-tRNA synthetase; HisRS

**This product is for research use only, not for use in human, therapeutic or diagnostic procedure.**

### Background

Aminoacyl-tRNA synthetases are a class of enzymes that charge tRNAs with their cognate amino acids. Histidine--tRNA ligase cytoplasmic encoded by HARS is a cytoplasmic enzyme which belongs to the class II family of aminoacyl-tRNA synthetases. The enzyme is responsible for the synthesis of histidyl-transfer RNA, which is essential for the incorporation of histidine into proteins. The gene is located in a head-to-head orientation with HARS1 on chromosome five, where the homologous genes share a bidirectional promoter. The gene product is a frequent target of autoantibodies in the human autoimmune disease polymyositis/dermatomyositis. Several transcript variants encoding different isoforms have been found for HARS.

### Recommended Dilution

WB: 1: 500 - 1: 2000

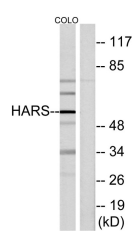
IHC: 1: 100 - 1: 300

IF: 1: 200 - 1: 1000

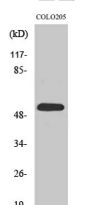
ELISA: 1: 20000

Not yet tested in other applications.

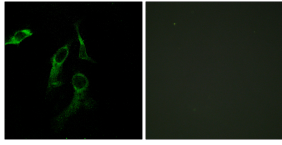
### Images



Western blot analysis of lysates from COLO cells, using HARS Antibody. The lane on the right is blocked with the synthesized peptide.



Western Blot analysis of various cells using HisRS Polyclonal Antibody diluted at 1:2000



Immunofluorescence analysis of HepG2 and HeLa cells, using HARS Antibody. The picture on the right is blocked with the synthesized peptide.

### Storage

-20°C for one year

501 Changsheng S Rd, Nanhu Dist, Jiaxing, Zhejiang, China

Tel: 86 21 31007137 | E-mail: [save@bt-laboratory.com](mailto:save@bt-laboratory.com) | [www.bt-laboratory.com](http://www.bt-laboratory.com)