

## Histone 1.0 Polyclonal Antibody

### Description

|                                |  |
|--------------------------------|--|
| <b>Product type</b>            | Primary Antibody   |
| <b>Code</b>                    | BT-AP03983   |
| <b>Host</b>                    | Rabbit   |
| <b>Isotype</b>                 | IgG  |
| <b>Size</b>                    | 20ul, 50ul, 100ul  |
| <b>Immunogen</b>               | The antiserum was produced against synthesized peptide derived from human Histone 1F0. AA range:71-120 |
| <b>Mol wt</b>                  | 20863  |
| <b>Species reactivity</b>      | Human  |
| <b>Clonality</b>               | Polyclonal   |
| <b>Recommended application</b> | WB, IHC-p, ELISA   |
| <b>Concentration</b>           | 1 mg/ml  |
| <b>Full name</b>               | Histone 1.0 Antibody   |
| <b>Synonyms</b>                | H1F0; H1FV; Histone H1.0; Histone H1'; Histone H1(0)   |

**This product is for research use only, not for use in human, therapeutic or diagnostic procedure.**

### Background

Histones are basic nuclear proteins that are responsible for the nucleosome structure of the chromosomal fiber in eukaryotes. Nucleosomes consist of approximately 146 bp of DNA wrapped around a histone octamer composed of pairs of each of the four core histones (H2A, H2B, H3, and H4). The chromatin fiber is further compacted through the interaction of a linker histone, H1, with the DNA between the nucleosomes to form higher order chromatin structures. H1F0 is intronless and encodes a replication-independent histone that is a member of the histone H1 family.

### Recommended Dilution

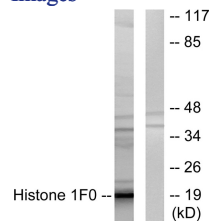
WB: 1: 500 - 1: 2000

IHC: 1: 100 - 1: 300

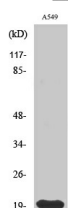
ELISA: 1: 40000

Not yet tested in other applications.

### Images



Western blot analysis of lysates from A549 cells, using Histone 1F0 Antibody. The lane on the right is blocked with the synthesized peptide.



Western Blot analysis of various cells using Histone 1.0 Polyclonal Antibody diluted at 1:2000

## Storage

-20°C for one year

501 Changsheng S Rd, Nanhu Dist, Jiaxing, Zhejiang, China

Tel: 86 21 31007137 | E-mail: [save@bt-laboratory.com](mailto:save@bt-laboratory.com) | [www.bt-laboratory.com](http://www.bt-laboratory.com)