

Histone deacetylase 7a Polyclonal Antibody

Description

| | |
|--------------------------------|---------------------------------------------------------------------------------------------------|
| Product type | Primary Antibody |
| Code | BT-AP03987 |
| Host | Rabbit |
| Isotype | IgG |
| Size | 20ul, 50ul, 100ul |
| Immunogen | The antiserum was produced against synthesized peptide derived from human HDAC7. AA range:901-950 |
| Mol wt | 102927 |
| Species reactivity | Human, Mouse |
| Clonality | Polyclonal |
| Recommended application | WB, IHC-p, ELISA |
| Concentration | 1 mg/ml |
| Full name | Histone deacetylase 7a Antibody |
| Synonyms | HDAC7; HDAC7A; Histone deacetylase 7; HD7; Histone deacetylase 7A; HD7a |

This product is for research use only, not for use in human, therapeutic or diagnostic procedure.

Background

Histones play a critical role in transcriptional regulation, cell cycle progression, and developmental events. Histone acetylation/deacetylation alters chromosome structure and affects transcription factor access to DNA. Histone deacetylase 7 encoded by HDAC7 has sequence homology to members of the histone deacetylase family. HDAC7 is orthologous to mouse HDAC7 gene whose protein promotes repression mediated via the transcriptional corepressor SMRT. Alternatively spliced transcript variants encoding different isoforms have been found for this gene.

Recommended Dilution

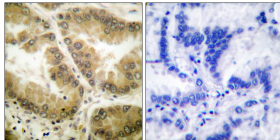
WB: 1: 500 - 1: 2000

IHC: 1: 100 - 1: 300

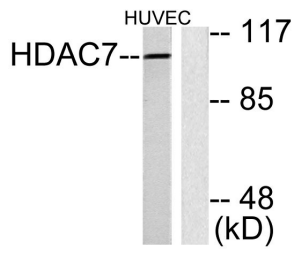
ELISA: 1: 10000

Not yet tested in other applications.

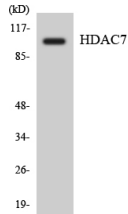
Images



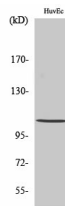
Immunohistochemistry analysis of paraffin-embedded human lung carcinoma tissue, using HDAC7 Antibody. The picture on the right is blocked with the synthesized peptide.



Western blot analysis of lysates from HUVEC cells, using HDAC7 Antibody. The lane on the right is blocked with the synthesized peptide.



Western blot analysis of the lysates from COLO205 cells using HDAC7 antibody.



Western Blot analysis of various cells using Histone deacetylase 7a Polyclonal Antibody

Storage

-20°C for one year

501 Changsheng S Rd, Nanhu Dist, Jiaxing, Zhejiang, China

Tel: 86 21 31007137 | E-mail: save@bt-laboratory.com | www.bt-laboratory.com