

Histone H1 (Mono Methyl Lys25) Polyclonal Antibody

Description

Product type	Primary Antibody
Code	BT-AP03990
Host	Rabbit
Isotype	IgG
Size	20ul, 50ul, 100ul
Immunogen	Synthetic Peptide of Histone H1 (Mono Methyl Lys25)
Mol wt	21842/21365/22350/21865
Species reactivity	Human, Mouse, Rat
Clonality	Polyclonal
Recommended application	WB
Concentration	1 mg/ml
Full name	Histone H1 (Mono Methyl Lys25) Antibody
Synonyms	HIST1H1A; H1F1; Histone H1.1; Histone H1a; HIST1H1C; H1F2; Histone H1.2; Histone H1c; Histone H1d; Histone H1s-1; HIST1H1D; H1F3; Histone H1.3; Histone H1c; Histone H1s-2; HIST1H1E; H1F4; Histone H1.4

This product is for research use only, not for use in human, therapeutic or diagnostic procedure.

Background

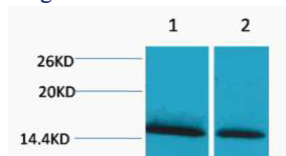
Histones are basic nuclear proteins responsible for nucleosome structure of the chromosomal fiber in eukaryotes. Two molecules of each of the four core histones (H2A, H2B, H3, and H4) form an octamer, around which approximately 146 bp of DNA is wrapped in repeating units, called nucleosomes. The linker histone, H1, interacts with linker DNA between nucleosomes and functions in the compaction of chromatin into higher order structures. HIST1H1A is intronless and encodes a replication-dependent histone that is a member of the histone H1 family. Transcripts from HIST1H1A lack polyA tails but instead contain a palindromic termination element. HIST1H1A is found in the large histone gene cluster on chromosome 6.

Recommended Dilution

WB: 1: 500 - 1000

Not yet tested in other applications.

Images



Western blot analysis of 1) HeLa, 2) 3T3, diluted at 1:2000. Secondary antibody was diluted at 1:20000

Storage

-20°C for one year