

Histone H2B (Acetyl Lys5) Polyclonal Antibody

Description

Product type	Primary Antibody
Code	BT-AP04017
Host	Rabbit
Isotype	IgG
Size	20ul, 50ul, 100ul
Immunogen	The antiserum was produced against synthesized peptide derived from human Histone H2B around the acetylated site of Lys5. AA range:1-50
Mol wt	13944
Species reactivity	Human, Mouse
Clonality	Polyclonal
Recommended application	WB, IHC-p, IF, ELISA
Concentration	1 mg/ml
Full name	Histone H2B (Acetyl Lys5) Antibody
Synonyms	H2BFS; Histone H2B type F-S; Histone H2B.s; H2B/s

This product is for research use only, not for use in human, therapeutic or diagnostic procedure.

Background

Histones are basic nuclear proteins that are responsible for the nucleosome structure of the chromosomal fiber in eukaryotes. Nucleosomes consist of approximately 146 bp of DNA wrapped around a histone octamer composed of pairs of each of the four core histones (H2A, H2B, H3, and H4). The chromatin fiber is further compacted through the interaction of a linker histone, H1, with the DNA between the nucleosomes to form higher order chromatin structures. This gene is intronless and encodes a member of the histone H2B family. Transcripts from this gene contain a palindromic termination element.

Recommended Dilution

WB: 1: 500 - 1: 2000

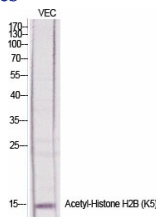
IHC: 1: 100 - 1: 300

IF: 1: 200 - 1: 1000

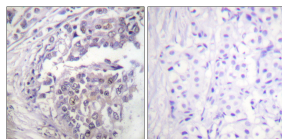
ELISA: 1: 10000

Not yet tested in other applications.

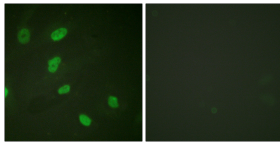
Images



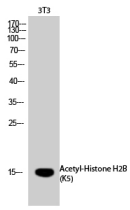
Western Blot analysis of various cells using Acetyl-Histone H2B (K5) Polyclonal Antibody diluted at 1:1000. Secondary antibody was diluted at 1:20000



Immunohistochemistry analysis of paraffin-embedded human breast carcinoma tissue, using Histone H2B (Acetyl-Lys5) Antibody. The picture on the right is blocked with the synthesized peptide.



Immunofluorescence analysis of HeLa cells, using Histone H2B (Acetyl-Lys5) Antibody. The picture on the right is blocked with the synthesized peptide.



Western Blot analysis of 3T3 cells using Acetyl-Histone H2B (K5) Polyclonal Antibody diluted at 1:1000. Secondary antibody was diluted at 1:20000

Storage

-20°C for one year

501 Changsheng S Rd, Nanhu Dist, Jiaxing, Zhejiang, China

Tel: 86 21 31007137 | E-mail: save@bt-laboratory.com | www.bt-laboratory.com