

Histone H2B (Di Methyl Lys43) Polyclonal Antibody

Description

Product type	Primary Antibody
Code	BT-AP04019
Host	Rabbit
Isotype	IgG
Size	20ul, 50ul, 100ul
Immunogen	Synthetic Peptide of Histone H2B (Di Methyl Lys43)
Mol wt	14167/13950/13906
Species reactivity	Human, Mouse, Rat
Clonality	Polyclonal
Recommended application	WB
Concentration	1 mg/ml
Full name	Histone H2B (Di Methyl Lys43) Antibody
Synonyms	HIST1H2BA; TSH2B; Histone H2B type 1-A; Histone H2B, testis; Testis-specific histone H2B; HIST1H2BB; H2BFF; Histone H2B type 1-B; Histone H2B.1; Histone H2B.f; H2B/f; HIST1H2BC; H2BFL; HIST1H2BE; H2BF

This product is for research use only, not for use in human, therapeutic or diagnostic procedure.

Background

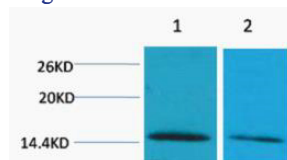
Histones are basic nuclear proteins that are responsible for the nucleosome structure of the chromosomal fiber in eukaryotes. Nucleosomes consist of approximately 146 bp of DNA wrapped around a histone octamer composed of pairs of each of the four core histones (H2A, H2B, H3, and H4). The chromatin fiber is further compacted through the interaction of a linker histone, H1, with the DNA between the nucleosomes to form higher order chromatin structures. HIST1H2BA is intronless and encodes a replication-dependent histone that is a testis/sperm-specific member of the histone H2B family. Transcripts from HIST1H2BA contain a palindromic termination element.

Recommended Dilution

WB: 1: 500 - 1000

Not yet tested in other applications.

Images



Western blot analysis of 1) HeLa, 2) 3T3, diluted at 1:2000. Secondary antibody was diluted at 1:20000 cells nucleus.

Storage

-20°C for one year