

## Histone H2B (Tri Methyl Lys5) Polyclonal Antibody

### Description

|                                |  |
|--------------------------------|--|
| <b>Product type</b>            | Primary Antibody   |
| <b>Code</b>                    | BT-AP04023   |
| <b>Host</b>                    | Rabbit   |
| <b>Isotype</b>                 | IgG  |
| <b>Size</b>                    | 20ul, 50ul, 100ul  |
| <b>Immunogen</b>               | Synthetic Peptide of Histone H2B (Tri Methyl Lys5)   |
| <b>Mol wt</b>                  | 14167/13950/13906  |
| <b>Species reactivity</b>      | Human, Mouse, Rat  |
| <b>Clonality</b>               | Polyclonal   |
| <b>Recommended application</b> | WB   |
| <b>Concentration</b>           | 1 mg/ml  |
| <b>Full name</b>               | Histone H2B (Tri Methyl Lys5) Antibody   |
| <b>Synonyms</b>                | HIST1H2BA; TSH2B; Histone H2B type 1-A; Histone H2B, testis; Testis-specific histone H2B; HIST1H2BB; H2BFF; Histone H2B type 1-B; Histone H2B.1; Histone H2B.f; H2B/f; HIST1H2BC; H2BFL; HIST1H2BE; H2BF |

This product is for research use only, not for use in human, therapeutic or diagnostic procedure.

### Background

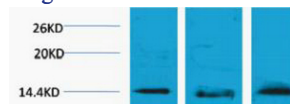
Histones are basic nuclear proteins that are responsible for the nucleosome structure of the chromosomal fiber in eukaryotes. Nucleosomes consist of approximately 146 bp of DNA wrapped around a histone octamer composed of pairs of each of the four core histones (H2A, H2B, H3, and H4). The chromatin fiber is further compacted through the interaction of a linker histone, H1, with the DNA between the nucleosomes to form higher order chromatin structures. HIST1H2BA is intronless and encodes a replication-dependent histone that is a testis/sperm-specific member of the histone H2B family. Transcripts from HIST1H2BA contain a palindromic termination element.

### Recommended Dilution

WB: 1: 1000 - 2000

Not yet tested in other applications.

### Images



Western blot analysis of 1) HeLa, 2) Rat Brain, 3) 3T3, diluted at 1:2000. Secondary antibody was diluted at 1:20000 cells nucleus.

### Storage

-20°C for one year