

Histone H2B Polyclonal Antibody

Description

| | |
|--------------------------------|--|
| Product type | Primary Antibody |
| Code | BT-AP04024 |
| Host | Rabbit |
| Isotype | IgG |
| Size | 20ul, 50ul, 100ul |
| Immunogen | The antiserum was produced against synthesized peptide derived from human Histone H2B. AA range:1-50 |
| Mol wt | 13944 |
| Species reactivity | Human, Mouse |
| Clonality | Polyclonal |
| Recommended application | WB, ELISA |
| Concentration | 1 mg/ml |
| Full name | Histone H2B Antibody |
| Synonyms | HIST1H2BB; H2BFF; Histone H2B type 1-B; Histone H2B.1; Histone H2B.f; H2B/f |

This product is for research use only, not for use in human, therapeutic or diagnostic procedure.

Background

H2BFS is a Pseudogene. Histone H2B type 1-H is a core component of nucleosome. Nucleosomes wrap and compact DNA into chromatin, limiting DNA accessibility to the cellular machineries which require DNA as a template. Histones thereby play a central role in transcription regulation, DNA repair, DNA replication and chromosomal stability. DNA accessibility is regulated via a complex set of post-translational modifications of histones, also called histone code, and nucleosome remodeling. Has broad antibacterial activity. May contribute to the formation of the functional antimicrobial barrier of the colonic epithelium, and to the bactericidal activity of amniotic fluid. Diseases associated with H2BFS include endometrial stromal sarcoma. Among its related pathways are Packaging Of Telomere Ends. Gene Ontology (GO) annotations related to this gene include sequence-specific DNA binding and protein heterodimerization activity. An important paralog of this gene is HIST1H2BH.

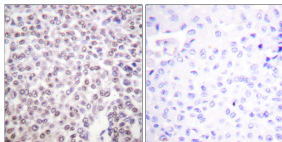
Recommended Dilution

WB: 1: 500 - 1: 2000

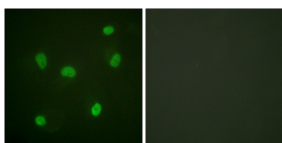
ELISA: 1: 40000

Not yet tested in other applications.

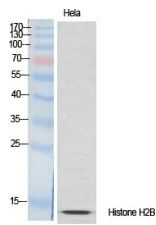
Images



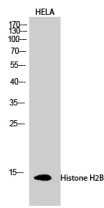
Immunohistochemistry analysis of paraffin-embedded human breast carcinoma tissue, using Histone H2B Antibody. The picture on the right is blocked with the synthesized peptide.



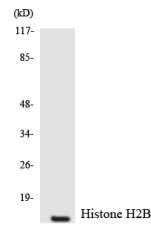
Immunofluorescence analysis of HeLa cells, using Histone H2B Antibody. The picture on the right is blocked with the synthesized peptide.



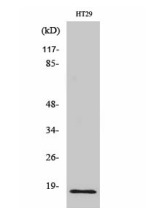
Western Blot analysis of various cells using Histone H2B Polyclonal Antibody diluted at 1:1000 cells nucleus.



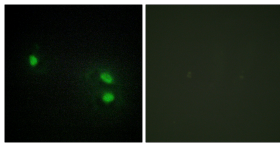
Western Blot analysis of HELA cells using Histone H2B Polyclonal Antibody diluted at 1:1000 cells nucleus.



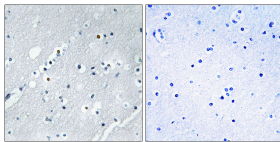
Western blot analysis of the lysates from HUVEC cells using Histone H2B antibody.



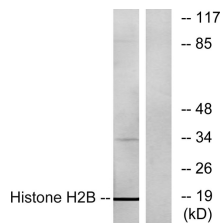
Western Blot analysis of various cells using Histone H2B Polyclonal Antibody cells nucleus.



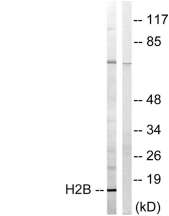
Immunofluorescence analysis of HeLa cells, using Histone H2B Antibody. The picture on the right is blocked with the synthesized peptide.



Immunohistochemistry analysis of paraffin-embedded human brain tissue, using Histone H2B Antibody. The picture on the right is blocked with the synthesized peptide.



Western blot analysis of lysates from A549 cells, using Histone H2B Antibody. The lane on the right is blocked with the synthesized peptide.



Western blot analysis of lysates from Jurkat cells, treated with UV 15', using Histone H2B Antibody. The lane on the right is blocked with the synthesized peptide.

Storage

-20°C for one year

501 Changsheng S Rd, Nanhu Dist, Jiaxing, Zhejiang, China

Tel: 86 21 31007137 | E-mail: save@bt-laboratory.com | www.bt-laboratory.com