

PARG Rabbit Polyclonal Antibody

Description

Product type	Primary Antibody
Code	BT-AP04027
Host	Rabbit
Isotype	IgG
Size	100ul, 50ul, 20ul
Immunogen	Synthesized peptide derived from human PARG
Mol wt	107360
Species reactivity	Human, Mouse, Rat
Clonality	Polyclonal
Recommended application	WB
Concentration	1 mg/ml
Full name	PARG
Synonyms	PARG

This product is for research use only, not for use in human, therapeutic or diagnostic procedure.

Background

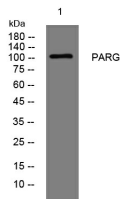
This gene encodes a member of the serine protease family of hydrolytic enzymes which contain a serine in their active site. The encoded protein may play a role in activation of the antiviral prodrug valacyclovir. Alternatively spliced transcript variants have been described.

Recommended Dilution

WB: 1: 500 - 1: 2000

Not yet tested in other applications.

Images



Storage

-20°C for 1 year

501 Changsheng S Rd, Nanhu Dist, Jiaxing, Zhejiang, China

Tel: 86 21 31007137 | E-mail: save@bt-laboratory.com | www.bt-laboratory.com