

Histone H4 (Acetyl Lys8) Polyclonal Antibody

Description

Product type	Primary Antibody
Code	BT-AP04105
Host	Rabbit
Isotype	IgG
Size	20ul, 50ul, 100ul
Immunogen	The antiserum was produced against synthesized peptide derived from human Histone H4 around the acetylated site of Lys8. AA range:1-50
Mol wt	11367
Species reactivity	Human, Mouse, Rat, Monkey
Clonality	Polyclonal
Recommended application	WB, IHC-p, IF, ELISA
Concentration	1 mg/ml
Full name	Histone H4 (Acetyl Lys8) Antibody
Synonyms	HIST1H4A; H4/A; H4FA; HIST1H4B; H4/I; H4FI; HIST1H4C; H4/G; H4FG; HIST1H4D; H4/B; H4FB; HIST1H4E; H4/J; H4FJ; HIST1H4F; H4/C; H4FC; HIST1H4H; H4/H; H4FH; HIST1H4I; H4/M; H4FM; HIST1H4J; H4/E; H4FE; HI

This product is for research use only, not for use in human, therapeutic or diagnostic procedure.

Background

Histones are basic nuclear proteins that are responsible for the nucleosome structure of the chromosomal fiber in eukaryotes. Nucleosomes consist of approximately 146 bp of DNA wrapped around a histone octamer composed of pairs of each of the four core histones (H2A, H2B, H3, and H4). The chromatin fiber is further compacted through the interaction of a linker histone, H1, with the DNA between the nucleosomes to form higher order chromatin structures. HIST4H4 is intronless and encodes a replication-dependent histone that is a member of the histone H4 family. Transcripts from HIST4H4 lack polyA tails; instead, they contain a palindromic termination element.

Recommended Dilution

WB: 1: 500 - 1: 2000

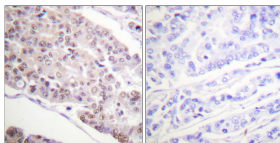
IHC: 1: 100 - 1: 300

IF: 1: 200 - 1: 1000

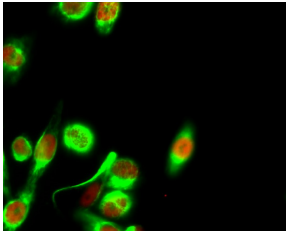
ELISA: 1: 5000

Not yet tested in other applications.

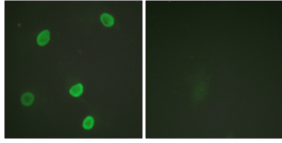
Images



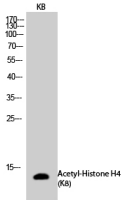
Immunohistochemistry analysis of paraffin-embedded human breast carcinoma tissue, using Histone H4 (Acetyl-Lys8) Antibody. The picture on the right is blocked with the synthesized peptide.



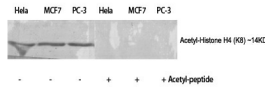
Immunofluorescence analysis of HeLa cell. 1, Histone H4 (Acetyl Lys8) Polyclonal Antibody (red) was diluted at 1:200 (4° overnight). HER2 Monoclonal Antibody (11H9) (green) was diluted at 1:200 (4° overnight). 2, Goat Anti Rabbit Alexa Fluor 594 was diluted at 1:1000 (room temperature, 50min). Goat Anti Mouse Alexa Fluor 488 was diluted at 1:1000 (room temperature, 50min).



Immunofluorescence analysis of HeLa cells, using Histone H4 (Acetyl-Lys8) Antibody. The picture on the right is blocked with the synthesized peptide.



Western Blot analysis of KB cells using Acetyl-Histone H4 (K8) Polyclonal Antibody diluted at 1:500. Secondary antibody was diluted at 1:20000



Western Blot analysis of various cells using Acetyl-Histone H4 (K8) Polyclonal Antibody diluted at 1:500. Secondary antibody was diluted at 1:20000

Storage

-20°C for one year

501 Changsheng S Rd, Nanhu Dist, Jiaxing, Zhejiang, China

Tel: 86 21 31007137 | E-mail: save@bt-laboratory.com | www.bt-laboratory.com