

## HLA-DP Alpha1 Polyclonal Antibody

### Description

|                         |  |
|-------------------------|--|
| Product type            | Primary Antibody   |
| Code                    | BT-AP04130   |
| Host                    | Rabbit   |
| Isotype                 | IgG  |
| Size                    | 20ul, 50ul, 100ul  |
| Immunogen               | Synthesized peptide derived from the Internal region of human HLA-DP $\alpha$ 1.   |
| Mol wt                  | 29381  |
| Species reactivity      | Human  |
| Clonality               | Polyclonal   |
| Recommended application | WB, ELISA  |
| Concentration           | 1 mg/ml  |
| Full name               | HLA-DPalpha1 Antibody  |
| Synonyms                | HLA-DPA1; HLA-DP1A; HLAB; HLA class II histocompatibility antigen; DP alpha 1 chain; DP(W3); DP(W4); HLA-SB alpha chain; MHC class II DP3-alpha; MHC class II DPA1 |

This product is for research use only, not for use in human, therapeutic or diagnostic procedure.

### Background

HLA-DPA1 belongs to the HLA class II alpha chain paralogues. This class II molecule is a heterodimer consisting of an alpha (DPA) and a beta (DPB) chain, both anchored in the membrane. It plays a central role in the immune system by presenting peptides derived from extracellular proteins. Class II molecules are expressed in antigen presenting cells (APC: b lymphocytes, dendritic cells, macrophages). The alpha chain is approximately 33-35 kDa and its gene contains 5 exons. Exon one encodes the leader peptide, exons 2 and 3 encode the two extracellular domains, exon 4 encodes the transmembrane domain and the cytoplasmic tail. Within the DP molecule both the alpha chain and the beta chain contain the polymorphisms specifying the peptide binding specificities, resulting in up to 4 different molecules.

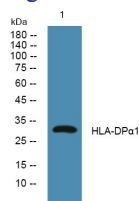
### Recommended Dilution

WB: 1: 500 - 1: 2000

ELISA: 1: 40000

Not yet tested in other applications.

### Images



Western blot analysis of lysates from SH-SY5Y cells, primary antibody was diluted at 1:1000, 4°over night

### Storage

-20°C for one year