

PIGM Rabbit Polyclonal Antibody

Description

Product type	Primary Antibody
Code	BT-AP04152
Host	Rabbit
Isotype	IgG
Size	100ul, 50ul, 20ul
Immunogen	Synthesized peptide derived from human PIGM
Mol wt	46530
Species reactivity	Human, Mouse, Rat
Clonality	Polyclonal
Recommended application	WB
Concentration	1 mg/ml
Full name	PIGM
Synonyms	PIGM

This product is for research use only, not for use in human, therapeutic or diagnostic procedure.

Background

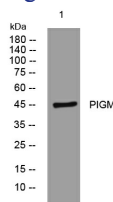
This gene encodes a transmembrane protein that is located in the endoplasmic reticulum and is involved in GPI-anchor biosynthesis. The glycosylphosphatidylinositol (GPI)-anchor is a glycolipid which contains three mannose molecules in its core backbone. The GPI-anchor is found on many blood cells and serves to anchor proteins to the cell surface. This gene encodes a mannosyltransferase| GPI-MT-I| that transfers the first mannose to GPI on the luminal side of the endoplasmic reticulum.

Recommended Dilution

WB: 1: 500 - 1: 2000

Not yet tested in other applications.

Images



Western blot analysis of lysates from A549 cells, primary antibody was diluted at 1:1000, 4°C overnight

Storage

-20°C for 1 year