

## HNF-1Beta Polyclonal Antibody

### Description

<b>Product type</b>	Primary Antibody
<b>Code</b>	BT-AP04153
<b>Host</b>	Rabbit
<b>Isotype</b>	IgG
<b>Size</b>	20ul, 50ul, 100ul
<b>Immunogen</b>	Synthesized peptide derived from the N-terminal region of human HNF-1 $\beta$ .
<b>Mol wt</b>	61324
<b>Species reactivity</b>	Human, Mouse, Rat
<b>Clonality</b>	Polyclonal
<b>Recommended application</b>	WB, ELISA
<b>Concentration</b>	1 mg/ml
<b>Full name</b>	HNF-1beta Antibody
<b>Synonyms</b>	HNF1B; TCF2; Hepatocyte nuclear factor 1-beta; HNF-1-beta; HNF-1B; Homeoprotein LFB3; Transcription factor 2; TCF-2; Variant hepatic nuclear factor 1; vHNF1

This product is for research use only, not for use in human, therapeutic or diagnostic procedure.

### Background

HNF1B encodes a member of the homeodomain-containing superfamily of transcription factors. Hepatocyte nuclear factor 1-beta binds to DNA as either a homodimer, or a heterodimer with the related protein hepatocyte nuclear factor 1-alpha. The gene has been shown to function in nephron development, and regulates development of the embryonic pancreas. Mutations in this gene result in renal cysts and diabetes syndrome and noninsulin-dependent diabetes mellitus, and expression of this gene is altered in some types of cancer. Multiple transcript variants encoding different isoforms have been found for this gene.

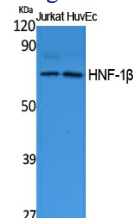
### Recommended Dilution

WB: 1: 500 - 1: 2000

ELISA: 1: 10000

Not yet tested in other applications.

### Images



Western Blot analysis of extracts from Jurkat cells, using HNF-1 $\beta$  Polyclonal Antibody. Secondary antibody was diluted at 1:20000

### Storage

-20°C for one year