

## hnRNP CL1 Polyclonal Antibody

### Description

<b>Product type</b>	Primary Antibody
<b>Code</b>	BT-AP04169
<b>Host</b>	Rabbit
<b>Isotype</b>	IgG
<b>Size</b>	20ul, 50ul, 100ul
<b>Immunogen</b>	The antiserum was produced against synthesized peptide derived from human HNRCL. AA range:31-80
<b>Mol wt</b>	32142
<b>Species reactivity</b>	Human
<b>Clonality</b>	Polyclonal
<b>Recommended application</b>	WB, ELISA
<b>Concentration</b>	1 mg/ml
<b>Full name</b>	hnRNP CL1 Antibody
<b>Synonyms</b>	HNRNPCL1; HNRPCL1; Heterogeneous nuclear ribonucleoprotein C-like 1; hnRNP C-like-1; hnRNP core protein C-like 1

This product is for research use only, not for use in human, therapeutic or diagnostic procedure.

### Background

HNRNPCL1 (Heterogeneous Nuclear Ribonucleoprotein C-Like 1) is a Protein Coding gene. GO annotations related to this gene include nucleic acid binding and nucleotide binding. An important paralog of this gene isHNRNPCL3.

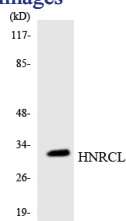
### Recommended Dilution

WB: 1: 500 - 1: 2000

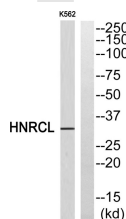
ELISA: 1: 20000

Not yet tested in other applications.

### Images



Western blot analysis of the lysates from RAW264.7cells using HNRCL antibody.



Western blot analysis of HNRCL Antibody. The lane on the right is blocked with the HNRCL peptide.

### Storage

-20°C for one year

