

## hnRNP L Polyclonal Antibody

### Description

<b>Product type</b>	Primary Antibody
<b>Code</b>	BT-AP04176
<b>Host</b>	Rabbit
<b>Isotype</b>	IgG
<b>Size</b>	20ul, 50ul, 100ul
<b>Immunogen</b>	The antiserum was produced against synthesized peptide derived from human hnRNP L. AA range:61-110
<b>Mol wt</b>	60187
<b>Species reactivity</b>	Human, Mouse
<b>Clonality</b>	Polyclonal
<b>Recommended application</b>	WB, IHC-p, IF, ELISA
<b>Concentration</b>	1 mg/ml
<b>Full name</b>	hnRNP L Antibody
<b>Synonyms</b>	HNRNPL; HNRPL; P/OKcl.14; Heterogeneous nuclear ribonucleoprotein L; hnRNP L

**This product is for research use only, not for use in human, therapeutic or diagnostic procedure.**

### Background

Heterogeneous nuclear RNAs (hnRNAs) which include mRNA precursors and mature mRNAs are associated with specific proteins to form heterogenous ribonucleoprotein (hnRNP) complexes. Heterogeneous nuclear ribonucleoprotein L is among the proteins that are stably associated with hnRNP complexes and along with other hnRNP proteins is likely to play a major role in the formation, packaging, processing, and function of mRNA. Heterogeneous nuclear ribonucleoprotein L is present in the nucleoplasm as part of the HNRP complex. HNRP proteins have also been identified outside of the nucleoplasm. Exchange of hnRNP for mRNA-binding proteins accompanies transport of mRNA from the nucleus to the cytoplasm. Since HNRP proteins have been shown to shuttle between the nucleus and the cytoplasm, it is possible that they also have cytoplasmic functions. Two transcript variants encoding different isoforms have been found for this gene.

### Recommended Dilution

WB: 1: 500 - 1: 2000

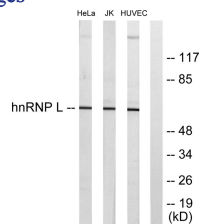
IHC: 1: 100 - 1: 300

IF: 1: 200 - 1: 1000

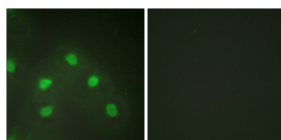
ELISA: 1: 20000

Not yet tested in other applications.

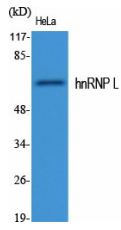
### Images



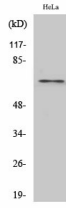
Western blot analysis of lysates from HeLa, Jurkat, and HUVEC cells, using hnRNP L Antibody. The lane on the right is blocked with the synthesized peptide.



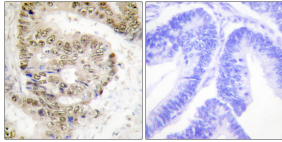
Immunofluorescence analysis of HeLa cells, using hnRNP L Antibody. The picture on the right is blocked with the synthesized peptide.



Western Blot analysis of various cells using hnRNP L Polyclonal Antibody cells nucleus.



Western Blot analysis of HuvEc cells using hnRNP L Polyclonal Antibody cells nucleus.



Immunohistochemistry analysis of paraffin-embedded human colon carcinoma tissue, using hnRNP L Antibody. The picture on the right is blocked with the synthesized peptide.

### Storage

-20°C for one year

501 Changsheng S Rd, Nanhu Dist, Jiaxing, Zhejiang, China

Tel: 86 21 31007137 | E-mail: [save@bt-laboratory.com](mailto:save@bt-laboratory.com) | [www.bt-laboratory.com](http://www.bt-laboratory.com)