

PLCD4 Rabbit Polyclonal Antibody

Description

Product type	Primary Antibody
Code	BT-AP04180
Host	Rabbit
Isotype	IgG
Size	100ul, 50ul, 20ul
Immunogen	Synthesized peptide derived from human PLCD4
Mol wt	N/A
Species reactivity	Human, Mouse, Rat
Clonality	Polyclonal
Recommended application	WB
Concentration	1 mg/ml
Full name	PLCD4
Synonyms	PLCD4; 1-phosphatidylinositol 4; 5-bisphosphate phosphodiesterase delta-4; hPLCD4; EC 3.1.4.11; Phosphoinositide phospholipase C-delta-4; Phospholipase C-delta-4; PLC-delta-4

This product is for research use only, not for use in human, therapeutic or diagnostic procedure.

Background

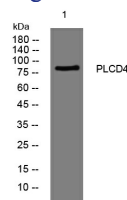
This gene encodes a member of the delta class of phospholipase C enzymes. Phospholipase C enzymes play a critical role in many cellular processes by hydrolyzing phosphatidylinositol 4|5-bisphosphate into two intracellular second messengers| inositol 1|4|5-trisphosphate and diacylglycerol. Expression of this gene may be a marker for cancer.

Recommended Dilution

WB: 1: 500 - 1: 2000

Not yet tested in other applications.

Images



Western blot analysis of lysates from HEK293 cells, primary antibody was diluted at 1:1000, 4°C overnight

Storage

-20°C for 1 year