

## Hox-A1 Polyclonal Antibody

### Description

|                                |   |
|--------------------------------|---|
| <b>Product type</b>            | Primary Antibody  |
| <b>Code</b>                    | BT-AP04184  |
| <b>Host</b>                    | Rabbit  |
| <b>Isotype</b>                 | IgG   |
| <b>Size</b>                    | 20ul, 50ul, 100ul   |
| <b>Immunogen</b>               | The antiserum was produced against synthesized peptide derived from human HOXA1. AA range:171-220 |
| <b>Mol wt</b>                  | 36641   |
| <b>Species reactivity</b>      | Human, Mouse, Rat   |
| <b>Clonality</b>               | Polyclonal  |
| <b>Recommended application</b> | WB, IHC-p, ELISA  |
| <b>Concentration</b>           | 1 mg/ml   |
| <b>Full name</b>               | Hox-A1 Antibody   |
| <b>Synonyms</b>                | HOXA1; HOX1F; Homeobox protein Hox-A1; Homeobox protein Hox-1F                                    |

This product is for research use only, not for use in human, therapeutic or diagnostic procedure.

### Background

In vertebrates, the genes encoding the class of transcription factors called homeobox genes are found in clusters named A, B, C, and D on four separate chromosomes. Expression of these proteins is spatially and temporally regulated during embryonic development. HOXA1 is part of the A cluster on chromosome 7 and encodes a DNA-binding transcription factor which may regulate gene expression, morphogenesis, and differentiation. The homeobox A1 may be involved in the placement of hindbrain segments in the proper location along the anterior-posterior axis during development. Two transcript variants encoding two different isoforms have been found for this gene, with only one of the isoforms containing the homeodomain region.

### Recommended Dilution

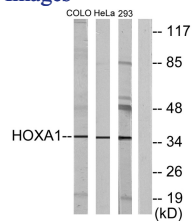
WB: 1: 500 - 1: 2000

IHC: 1: 100 - 1: 300

ELISA: 1: 20000

Not yet tested in other applications.

### Images



Western blot analysis of lysates from HeLa, COLO, and 293 cells, using HOXA1 Antibody. The lane on the right is blocked with the synthesized peptide.

### Storage

-20°C for one year