

## Hox-A1/B1/D1 Polyclonal Antibody

### Description

<b>Product type</b>	Primary Antibody
<b>Code</b>	BT-AP04185
<b>Host</b>	Rabbit
<b>Isotype</b>	IgG
<b>Size</b>	20ul, 50ul, 100ul
<b>Immunogen</b>	The antiserum was produced against synthesized peptide derived from human HOXA1/B1/D1. AA range:216-265
<b>Mol wt</b>	32121
<b>Species reactivity</b>	Human, Mouse
<b>Clonality</b>	Polyclonal
<b>Recommended application</b>	IHC-p, ELISA
<b>Concentration</b>	1 mg/ml
<b>Full name</b>	Hox-A1/B1/D1 Antibody
<b>Synonyms</b>	HOXB1; HOX2I; Homeobox protein Hox-B1; Homeobox protein Hox-2I; HOXA1; HOX1F; Homeobox protein Hox-A1; Homeobox protein Hox-1F; HOXD1; HOX4; HOX4G; Homeobox protein Hox-D1; Homeobox protein Hox-GG

**This product is for research use only, not for use in human, therapeutic or diagnostic procedure.**

### Background

HOXB1 belongs to the homeobox family of genes. The homeobox genes encode a highly conserved family of transcription factors that play an important role in morphogenesis in all multicellular organisms. Mammals possess four similar homeobox gene clusters, HOXA, HOXB, HOXC and HOXD, located on different chromosomes, consisting of 9 to 11 genes arranged in tandem. This gene is one of several homeobox HOXB genes located in a cluster on chromosome 17.

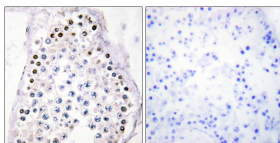
### Recommended Dilution

IHC: 1: 100 - 1: 300

ELISA: 1: 10000

Not yet tested in other applications.

### Images



Immunohistochemistry analysis of paraffin-embedded human testis tissue, using HOXA1/B1/D1 Antibody. The picture on the right is blocked with the synthesized peptide.

### Storage

-20°C for one year