

HoxB2 Polyclonal Antibody

Description

Product type	Primary Antibody
Code	BT-AP04190
Host	Rabbit
Isotype	IgG
Size	20ul, 50ul, 100ul
Immunogen	The antiserum was produced against synthesized peptide derived from human HOXB2. AA range:41-90
Mol wt	37914
Species reactivity	Human
Clonality	Polyclonal
Recommended application	WB, ELISA
Concentration	1 mg/ml
Full name	HoxB2 Antibody
Synonyms	HOXB2; HOX2H; Homeobox protein Hox-B2; Homeobox protein Hox-2.8; Homeobox protein Hox-2H; K8

This product is for research use only, not for use in human, therapeutic or diagnostic procedure.

Background

HOXB2 is a member of the Antp homeobox family and encodes a nuclear protein with a homeobox DNA-binding domain. It is included in a cluster of homeobox B genes located on chromosome 17. The encoded protein functions as a sequence-specific transcription factor that is involved in development. Increased expression of this gene is associated with pancreatic cancer.

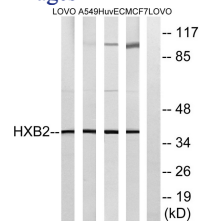
Recommended Dilution

WB: 1: 500 - 1: 2000

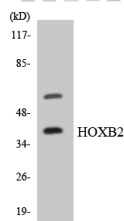
ELISA: 1: 20000

Not yet tested in other applications.

Images



Western blot analysis of lysates from MCF-7, HUVEC, A549, and LOVO cells, using HOXB2 Antibody. The lane on the right is blocked with the synthesized peptide.



Western blot analysis of the lysates from HUVEC cells using HOXB2 antibody.

Storage

-20°C for one year

501 Changsheng S Rd, Nanhu Dist, Jiaxing, Zhejiang, China

Tel: 86 21 31007137 | E-mail: save@bt-laboratory.com | www.bt-laboratory.com