

HPK1 Polyclonal Antibody

Description

| | |
|--------------------------------|---|
| Product type | Primary Antibody |
| Code | BT-AP04205 |
| Host | Rabbit |
| Isotype | IgG |
| Size | 20ul, 50ul, 100ul |
| Immunogen | The antiserum was produced against synthesized peptide derived from human MEKKK 1. AA range:371-420 |
| Mol wt | 91296 |
| Species reactivity | Human, Mouse |
| Clonality | Polyclonal |
| Recommended application | WB, IHC-p, ELISA |
| Concentration | 1 mg/ml |
| Full name | HPK1 Antibody |
| Synonyms | MAP4K1; HPK1; Mitogen-activated protein kinase kinase kinase kinase 1; Hematopoietic progenitor kinase; MAPK/ERK kinase kinase kinase 1; MEK kinase kinase 1; MEKKK 1 |

This product is for research use only, not for use in human, therapeutic or diagnostic procedure.

Background

MAP4K1 is a Protein Coding gene. Mitogen-Activated Protein Kinase Kinase Kinase Kinase 1 is a serine/threonine-protein kinase, which may play a role in the response to environmental stress. Appears to act upstream of the JUN N-terminal pathway. May play a role in hematopoietic lineage decisions and growth regulation. Able to autophosphorylate. Among its related pathways are Prostate Cancer and B Cell Receptor Signaling Pathway (WikiPathways). Gene Ontology (GO) annotations related to this gene include transferase activity, transferring phosphorus-containing groups and protein tyrosine kinase activity. An important paralog of this gene is MAP4K3.

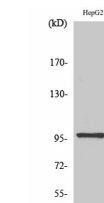
Recommended Dilution

WB: 1: 500 - 1: 2000

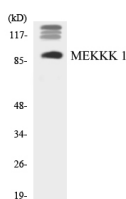
ELISA: 1: 10000

Not yet tested in other applications.

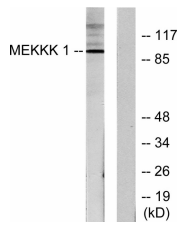
Images



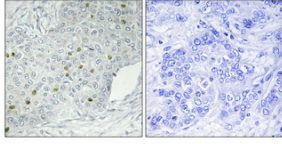
Western Blot analysis of various cells using HPK1 Polyclonal Antibody diluted at 1:1000



Western blot analysis of the lysates from HUVEC cells using MEKKK 1 antibody.



Western blot analysis of lysates from HepG2 cells, using MEKKK 1 Antibody. The lane on the right is blocked with the synthesized peptide.



Immunohistochemical analysis of paraffin-embedded Human breast cancer. Antibody was diluted at 1:100(4° overnight). High-pressure and temperature Tris-EDTA,pH8.0 was used for antigen retrieval. Negative contrl (right) obtaned from antibody was pre-absorbed by immunogen peptide.

Storage

-20°C for one year

501 Changsheng S Rd, Nanhu Dist, Jiaxing, Zhejiang, China

Tel: 86 21 31007137 | E-mail: save@bt-laboratory.com | www.bt-laboratory.com