

HRF Polyclonal Antibody

Description

Product type	Primary Antibody
Code	BT-AP04210
Host	Rabbit
Isotype	IgG
Size	20ul, 50ul, 100ul
Immunogen	The antiserum was produced against synthesized peptide derived from human TCTP. AA range:71-120
Mol wt	19595
Species reactivity	Human, Mouse, Rat
Clonality	Polyclonal
Recommended application	WB, IHC-p, IF, ELISA
Concentration	1 mg/ml
Full name	HRF Antibody
Synonyms	TPT1; Translationally-controlled tumor protein; TCTP; Fortilin; Histamine-releasing factor; HRF; p23

This product is for research use only, not for use in human, therapeutic or diagnostic procedure.

Background

TPT1 is a Protein Coding gene. Translationally-Controlled 1 is a tumor protein, involved in calcium binding and microtubule stabilization. Diseases associated with TPT1 include urticaria and allergic hypersensitivity disease. Among its related pathways are PLK1 signaling events. Gene Ontology (GO) annotations related to this gene include poly(A) RNA binding and transcription factor binding.

Recommended Dilution

WB: 1: 500 - 1: 2000

IHC: 1: 100 - 1: 300

IF: 1: 200 - 1: 1000

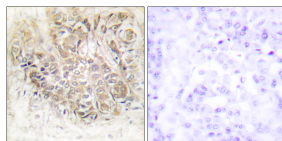
ELISA: 1: 20000

Not yet tested in other applications.

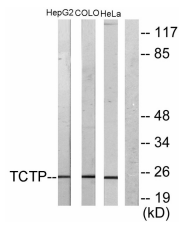
Images



Western Blot analysis of various cells using HRF Polyclonal Antibody



Immunohistochemistry analysis of paraffin-embedded human breast carcinoma tissue, using TCTP Antibody. The picture on the right is blocked with the synthesized peptide.



Storage

-20°C for one year

501 Changsheng S Rd, Nanhu Dist, Jiaxing, Zhejiang, China

Tel: 86 21 31007137 | E-mail: save@bt-laboratory.com | www.bt-laboratory.com