

Hrs Polyclonal Antibody

Description

Product type	Primary Antibody
Code	BT-AP04217
Host	Rabbit
Isotype	IgG
Size	20ul, 50ul, 100ul
Immunogen	The antiserum was produced against synthesized peptide derived from human HRS. AA range:301-350
Mol wt	86192
Species reactivity	Human, Mouse, Rat
Clonality	Polyclonal
Recommended application	WB, IHC-p, IF, ELISA
Concentration	1 mg/ml
Full name	Hrs Antibody
Synonyms	HGS; HRS; Hepatocyte growth factor-regulated tyrosine kinase substrate; Hrs; Protein pp110

This product is for research use only, not for use in human, therapeutic or diagnostic procedure.

Background

The protein encoded by HGS (hepatocyte growth factor-regulated tyrosine kinase substrate) regulates endosomal sorting and plays a critical role in the recycling and degradation of membrane receptors. The encoded protein sorts monoubiquitinated membrane proteins into the multivesicular body, targeting these proteins for lysosome-dependent degradation.

Recommended Dilution

WB: 1: 500 - 1: 2000

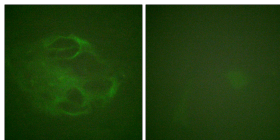
IHC: 1: 100 - 1: 300

IF: 1: 200 - 1: 1000

ELISA: 1: 20000

Not yet tested in other applications.

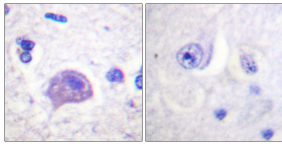
Images



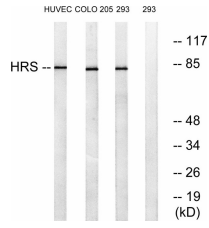
Immunofluorescence analysis of HeLa cells, using HRS Antibody. The picture on the right is blocked with the synthesized peptide.



Western Blot analysis of various cells using Hrs Polyclonal Antibody diluted at 1:500



Immunohistochemistry analysis of paraffin-embedded human brain tissue, using HRS Antibody. The picture on the right is blocked with the synthesized peptide.



Western blot analysis of lysates from 293, COLO, and HUVEC cells, using HRS Antibody. The lane on the right is blocked with the synthesized peptide.

Storage

-20°C for one year

501 Changsheng S Rd, Nanhu Dist, Jiaxing, Zhejiang, China

Tel: 86 21 31007137 | E-mail: save@bt-laboratory.com | www.bt-laboratory.com