

## HSC 70 Polyclonal Antibody

### Description

<b>Product type</b>	Primary Antibody
<b>Code</b>	BT-AP04223
<b>Host</b>	Rabbit
<b>Isotype</b>	IgG
<b>Size</b>	20ul, 50ul, 100ul
<b>Immunogen</b>	The antiserum was produced against synthesized peptide derived from human HSPA8. AA range:230-279
<b>Mol wt</b>	70898
<b>Species reactivity</b>	Human, Mouse, Rat
<b>Clonality</b>	Polyclonal
<b>Recommended application</b>	WB, ELISA
<b>Concentration</b>	1 mg/ml
<b>Full name</b>	HSC 70 Antibody
<b>Synonyms</b>	HSPA8; HSC70; HSP73; HSPA10; Heat shock cognate 71 kDa protein; Heat shock 70 kDa protein 8

This product is for research use only, not for use in human, therapeutic or diagnostic procedure.

### Background

HSPA8 encodes a member of the heat shock protein 70 family, which contains both heat-inducible and constitutively expressed members. Heat shock cognate 71 kDa protein belongs to the latter group, which are also referred to as heat-shock cognate proteins. It functions as a chaperone, and binds to nascent polypeptides to facilitate correct folding. It also functions as an ATPase in the disassembly of clathrin-coated vesicles during transport of membrane components through the cell. Alternatively spliced transcript variants encoding different isoforms have been found for this gene.

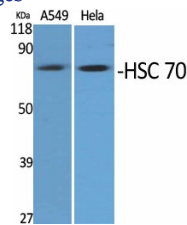
### Recommended Dilution

WB: 1: 500 - 1: 2000

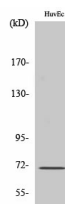
ELISA: 1: 10000

Not yet tested in other applications.

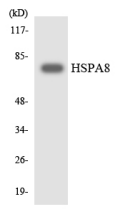
### Images



Western Blot analysis of various cells using HSC 70 Polyclonal Antibody



Western Blot analysis of HeLa cells using HSC 70 Polyclonal Antibody



Western blot analysis of the lysates from HT-29 cells using HSPA8 antibody.

### Storage

-20°C for one year

501 Changsheng S Rd, Nanhu Dist, Jiaxing, Zhejiang, China

Tel: 86 21 31007137 | E-mail: [save@bt-laboratory.com](mailto:save@bt-laboratory.com) | [www.bt-laboratory.com](http://www.bt-laboratory.com)