

## HSF1 Polyclonal Antibody

### Description

<b>Product type</b>	Primary Antibody
<b>Code</b>	BT-AP04229
<b>Host</b>	Rabbit
<b>Isotype</b>	IgG
<b>Size</b>	20ul, 50ul, 100ul
<b>Immunogen</b>	The antiserum was produced against synthesized peptide derived from human HSF1. AA range:87-136
<b>Mol wt</b>	30603
<b>Species reactivity</b>	Human, Mouse
<b>Clonality</b>	Polyclonal
<b>Recommended application</b>	WB, IHC-p, ELISA
<b>Concentration</b>	1 mg/ml
<b>Full name</b>	HSF1 Antibody
<b>Synonyms</b>	HSF1; HSTF1; Heat shock factor protein 1; HSF 1; Heat shock transcription factor 1; HSTF 1

This product is for research use only, not for use in human, therapeutic or diagnostic procedure.

### Background

Heat shock factor protein 1 encoded by HSF1 is a heat-shock transcription factor. Transcription of heat-shock genes is rapidly induced after temperature stress. Hsp90, by itself and/or associated with multichaperone complexes, is a major repressor of this gene.

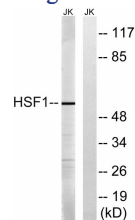
### Recommended Dilution

WB: 1: 500 - 1: 2000

ELISA: 1: 40000

Not yet tested in other applications.

### Images



Western blot analysis of lysates from Jurkat cells, using HSF1 Antibody. The lane on the right is blocked with the synthesized peptide.

### Storage

-20°C for one year