

HSF1 Polyclonal Antibody

Description

Product type	Primary Antibody
Code	BT-AP04230
Host	Rabbit
Isotype	IgG
Size	20ul, 50ul, 100ul
Immunogen	The antiserum was produced against synthesized peptide derived from human HSF1. AA range:108-157
Mol wt	30603
Species reactivity	Human, Mouse
Clonality	Polyclonal
Recommended application	WB, IHC-p, ELISA
Concentration	1 mg/ml
Full name	HSF1 Antibody
Synonyms	HSF1; HSTF1; Heat shock factor protein 1; HSF 1; Heat shock transcription factor 1; HSTF 1

This product is for research use only, not for use in human, therapeutic or diagnostic procedure.

Background

The product of HSF1 is a heat-shock transcription factor. Transcription of heat-shock genes is rapidly induced after temperature stress. Hsp90, by itself and/or associated with multichaperone complexes, is a major repressor of HSF1.

Recommended Dilution

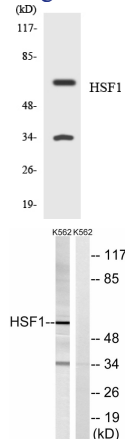
WB: 1: 500 - 1: 2000

IHC: 1: 100 - 1: 300

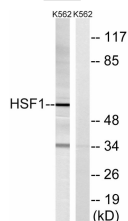
ELISA: 1: 40000

Not yet tested in other applications.

Images



Western blot analysis of the lysates from K562 cells using HSF1 antibody.



Western blot analysis of lysates from K562 cells, using HSF1 Antibody. The lane on the right is blocked with the synthesized peptide.

Storage

-20°C for one year

