

HSFX1 Polyclonal Antibody

Description

Product type	Primary Antibody
Code	BT-AP04235
Host	Rabbit
Isotype	IgG
Size	20ul, 50ul, 100ul
Immunogen	The antiserum was produced against synthesized peptide derived from human LW-1. AA range:10-59
Mol wt	46742
Species reactivity	Human
Clonality	Polyclonal
Recommended application	WB, ELISA
Concentration	1 mg/ml
Full name	HSFX1 Antibody
Synonyms	HSFX1; LW-1; HSF2; Heat shock transcription factor; X-linked

This product is for research use only, not for use in human, therapeutic or diagnostic procedure.

Background

HSFX2 is a Protein Coding gene. Gene Ontology (GO) annotations related to this gene include transcription factor activity, sequence-specific DNA binding and sequence-specific DNA binding. An important paralog of this gene is HSF1.

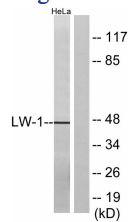
Recommended Dilution

WB: 1: 500 - 1: 2000

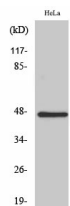
ELISA: 1: 10000

Not yet tested in other applications.

Images



Western blot analysis of lysates from HeLa cells, using LW-1 Antibody. The lane on the right is blocked with the synthesized peptide.



Western Blot analysis of various cells using HSF1 Polyclonal Antibody

Storage

-20°C for one year