

HSL Polyclonal Antibody

Description

Product type	Primary Antibody
Code	BT-AP04236
Host	Rabbit
Isotype	IgG
Size	20ul, 50ul, 100ul
Immunogen	The antiserum was produced against synthesized peptide derived from human HSL. AA range:520-569
Mol wt	116568
Species reactivity	Human, Mouse, Rat
Clonality	Polyclonal
Recommended application	WB, IHC-p, ELISA
Concentration	1 mg/ml
Full name	HSL Antibody
Synonyms	LIPE; Hormone-sensitive lipase; HSL

This product is for research use only, not for use in human, therapeutic or diagnostic procedure.

Background

Hormone-sensitive lipase by LIPE has a long and a short form, generated by use of alternative translational start codons. The long form is expressed in steroidogenic tissues such as testis, where it converts cholesteryl esters to free cholesterol for steroid hormone production. The short form is expressed in adipose tissue, among others, where it hydrolyzes stored triglycerides to free fatty acids.

Recommended Dilution

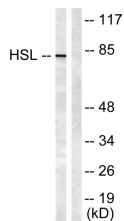
WB: 1: 500 - 1: 2000

IHC: 1: 100 - 1: 300

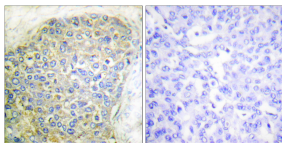
ELISA: 1: 5000

Not yet tested in other applications.

Images



Western blot analysis of lysates from HeLa cells, treated with Calyculin A 100nM 30', using HSL Antibody. The lane on the right is blocked with the synthesized peptide.



Immunohistochemistry analysis of paraffin-embedded human breast carcinoma tissue, using HSL Antibody. The picture on the right is blocked with the synthesized peptide.

Storage

-20°C for one year