

## HSP27 Polyclonal Antibody

### Description

<b>Product type</b>	Primary Antibody
<b>Code</b>	BT-AP04250
<b>Host</b>	Rabbit
<b>Isotype</b>	IgG
<b>Size</b>	20ul, 50ul, 100ul
<b>Immunogen</b>	Synthetic peptide from human protein at AA range: 60-100
<b>Mol wt</b>	22783
<b>Species reactivity</b>	Human
<b>Clonality</b>	Polyclonal
<b>Recommended application</b>	WB, ELISA
<b>Concentration</b>	1 mg/ml
<b>Full name</b>	HSP27 Antibody
<b>Synonyms</b>	HSPB1 HSP27 HSP28

This product is for research use only, not for use in human, therapeutic or diagnostic procedure.

### Background

Heat shock protein family B (small) member 1 encoded by HSPB1 is induced by environmental stress and developmental changes. Heat shock protein family B (small) member 1 is involved in stress resistance and actin organization and translocates from the cytoplasm to the nucleus upon stress induction. Defects in HSPB1 are a cause of Charcot-Marie-Tooth disease type 2F (CMT2F) and distal hereditary motor neuropathy (dHMN).

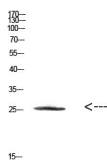
### Recommended Dilution

WB: 1: 500 - 2000

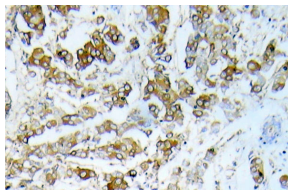
ELISA: 1: 10000 - 20000

Not yet tested in other applications.

### Images



Western Blot analysis of NT28 cells using Antibody diluted at 500. Secondary antibody was diluted at 1:20000



Immunohistochemistry analysis of HSP27 antibody in paraffin-embedded human breast carcinoma tissue.

## Storage

-20°C for one year

501 Changsheng S Rd, Nanhu Dist, Jiaxing, Zhejiang, China

Tel: 86 21 31007137 | E-mail: [save@bt-laboratory.com](mailto:save@bt-laboratory.com) | [www.bt-laboratory.com](http://www.bt-laboratory.com)