

HSP27 Polyclonal Antibody

Description

Product type	Primary Antibody
Code	BT-AP04253
Host	Rabbit
Isotype	IgG
Size	20ul, 50ul, 100ul
Immunogen	Synthesized peptide derived from human HSP27 around the non-phosphorylation site of S15.
Mol wt	22783
Species reactivity	Human, Mouse, Rat
Clonality	Polyclonal
Recommended application	WB, IHC-p
Concentration	1 mg/ml
Full name	HSP27 Antibody
Synonyms	HSPB1; HSP27; HSP28; Heat shock protein beta-1; HspB1; 28 kDa heat shock protein; Estrogen-regulated 24 kDa protein; Heat shock 27 kDa protein; HSP 27; Stress-responsive protein 27; SRP27

This product is for research use only, not for use in human, therapeutic or diagnostic procedure.

Background

Heat shock protein family B (small) member 1 encoded by HSPB1 is induced by environmental stress and developmental changes. Heat shock protein family B (small) member 1 is involved in stress resistance and actin organization and translocates from the cytoplasm to the nucleus upon stress induction. Defects in HSPB1 are a cause of Charcot-Marie-Tooth disease type 2F (CMT2F) and distal hereditary motor neuropathy (dHMN).

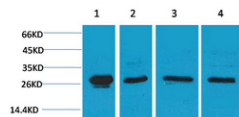
Recommended Dilution

WB: 1: 500 - 1: 2000

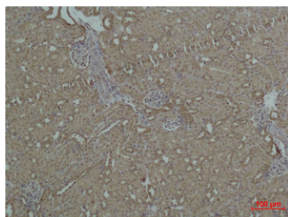
IHC-p: 1: 50 - 300

Not yet tested in other applications.

Images



Western blot analysis of 1) HeLa, 2) C2C12, 3) Mouse Brain, 4) Rat Brain using HSP27 Polyclonal Antibody. Secondary antibody was diluted at 1:20000



Immunohistochemical analysis of paraffin-embedded Mouse Kidney Tissue using HSP27 Polyclonal Antibody.

Storage

-20°C for one year