

## HSP60 Polyclonal Antibody

### Description

<b>Product type</b>	Primary Antibody
<b>Code</b>	BT-AP04258
<b>Host</b>	Rabbit
<b>Isotype</b>	IgG
<b>Size</b>	20ul, 50ul, 100ul
<b>Immunogen</b>	The antiserum was produced against synthesized peptide derived from human HSP60. AA range:511-560
<b>Mol wt</b>	44868
<b>Species reactivity</b>	Human, Mouse, Rat
<b>Clonality</b>	Polyclonal
<b>Recommended application</b>	WB, IHC-p, IF, ELISA
<b>Concentration</b>	1 mg/ml
<b>Full name</b>	HSP60 Antibody
<b>Synonyms</b>	HSPD1; HSP60; 60 kDa heat shock protein; mitochondrial; 60 kDa chaperonin; Chaperonin 60; CPN60; Heat shock protein 60; HSP-60; Hsp60; HuCHA60; Mitochondrial matrix protein P1; P60 lymphocyte protein

**This product is for research use only, not for use in human, therapeutic or diagnostic procedure.**

### Background

DNAJA1 encodes a member of the DnaJ family of proteins, which act as heat shock protein 70 cochaperones. Heat shock proteins facilitate protein folding, trafficking, prevention of aggregation, and proteolytic degradation. Members of this family are characterized by a highly conserved N-terminal J domain, a glycine/phenylalanine-rich region, four CxxCxGxG zinc finger repeats, and a C-terminal substrate-binding domain. The J domain mediates the interaction with heat shock protein 70 to recruit substrates and regulate ATP hydrolysis activity. In humans, this gene has been implicated in positive regulation of virus replication through co-option by the influenza A virus. Several pseudogenes of this gene are found on other chromosomes.

### Recommended Dilution

WB: 1: 500 - 1: 2000

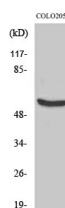
IHC: 1: 100 - 1: 300

IF: 1: 200 - 1: 1000

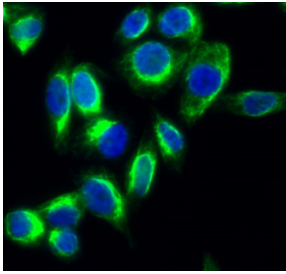
ELISA: 1: 10000

Not yet tested in other applications.

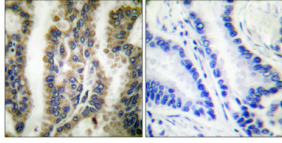
### Images



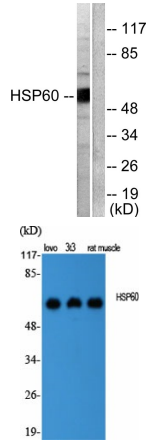
Western Blot analysis of COLO205 cells using HSP60 Polyclonal Antibody diluted at 1:2000



Immunofluorescence analysis of HeLa cell. 1, HSP60 Polyclonal Antibody (green) was diluted at 1:200 (4° overnight). 2, Goat Anti Rabbit Alexa Fluor 488 was diluted at 1:1000 (room temperature, 50min). 3 DAPI (blue) 10min.

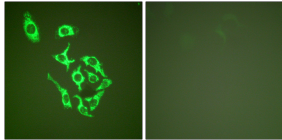


Immunohistochemical analysis of paraffin-embedded Human lung cancer. Antibody was diluted at 1:100 (4° overnight). High-pressure and temperature Tris-EDTA, pH 8.0 was used for antigen retrieval. Negative control (right) obtained from antibody was pre-absorbed by immunogen peptide.

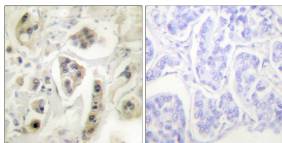


Western blot analysis of lysates from COLO205 cells, using HSP60 Antibody. The lane on the right is blocked with the synthesized peptide.

Western Blot analysis of various cells using HSP60 Polyclonal Antibody diluted at 1:2000



Immunofluorescence analysis of HepG2 cells, using HSP60 Antibody. The picture on the right is blocked with the synthesized peptide.



Immunohistochemistry analysis of paraffin-embedded human lung carcinoma tissue, using HSP60 Antibody. The picture on the right is blocked with the synthesized peptide.

### Storage

-20°C for one year

501 Changsheng S Rd, Nanhu Dist, Jiaxing, Zhejiang, China

Tel: 86 21 31007137 | E-mail: [save@bt-laboratory.com](mailto:save@bt-laboratory.com) | [www.bt-laboratory.com](http://www.bt-laboratory.com)