

HSP70 Polyclonal Antibody

Description

Product type	Primary Antibody
Code	BT-AP04261
Host	Rabbit
Isotype	IgG
Size	20ul, 50ul, 100ul
Immunogen	The antiserum was produced against synthesized peptide derived from the C-terminal region of human HSPA1A/HSPA1B. AA range:561-610
Mol wt	70052
Species reactivity	Human
Clonality	Polyclonal
Recommended application	WB, ELISA
Concentration	1 mg/ml
Full name	HSP70 Antibody
Synonyms	heat shock 70kDa protein 1A; heat shock 70kDa protein 1B

This product is for research use only, not for use in human, therapeutic or diagnostic procedure.

Background

This intronless gene HSPA1A(heat shock protein family A(Hsp70) member 1A) encodes a 70kDa heat shock protein which is a member of the heat shock protein 70 family. In conjunction with other heat shock proteins, this protein stabilizes existing proteins against aggregation and mediates the folding of newly translated proteins in the cytosol and in organelles. It is also involved in the ubiquitin-proteasome pathway through interaction with the AU-rich element RNA-binding protein 1. HSPA1A is located in the major histocompatibility complex class III region, in a cluster with two closely related genes which encode similar proteins.

Recommended Dilution

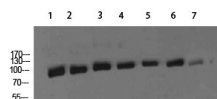
WB: 1: 500 - 2000

ELISA: 1: 10000 - 20000

Not yet tested in other applications.

Images

MOUSE-BRAIN



1,mouse-kidney 2,mouse-heart 3,mouse-brain 4,mouse-lung
5,HeLa 6,KB 7,SH-SY5Y

Western Blot analysis of mouse-kidney mouse-heart mouse-brain mouse-lung HeLa KB SH-SY5Y cells using HSP70 Polyclonal Antibody diluted at 1:2000. Secondary antibody was diluted at 1:20000

Storage

-20°C for one year

501 Changsheng S Rd, Nanhu Dist, Jiaxing, Zhejiang, China

Tel: 86 21 31007137 | E-mail: save@bt-laboratory.com | www.bt-laboratory.com