

HSP70 Polyclonal Antibody

Description

Product type	Primary Antibody
Code	BT-AP04263
Host	Rabbit
Isotype	IgG
Size	20ul, 50ul, 100ul
Immunogen	Synthesized peptide derived from human HSP70 around the non-acetylation site of K246.
Mol wt	70052
Species reactivity	Human
Clonality	Polyclonal
Recommended application	IF, WB, IHC-p, ELISA
Concentration	1 mg/ml
Full name	HSP70 Antibody
Synonyms	HSPA1A; HSPA1; HSPA1B; Heat shock 70 kDa protein 1A/1B; Heat shock 70 kDa protein 1/2; HSP70-1/HSP70-2; HSP70.1/HSP70.2

This product is for research use only, not for use in human, therapeutic or diagnostic procedure.

Background

HSPA1A encodes a 70kDa heat shock protein which is a member of the heat shock protein 70 family. In conjunction with other heat shock proteins, heat shock protein family A (Hsp70) member 1A stabilizes existing proteins against aggregation and mediates the folding of newly translated proteins in the cytosol and in organelles. It is also involved in the ubiquitin-proteasome pathway through interaction with the AU-rich element RNA-binding protein 1. HSPA1A is located in the major histocompatibility complex class III region, in a cluster with two closely related genes which encode similar proteins.

Recommended Dilution

WB: 1: 500 - 1: 2000

IHC-p: 1: 100 - 1: 300

ELISA: 1: 20000

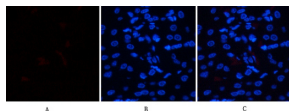
IF: 1: 50 - 200

Not yet tested in other applications.

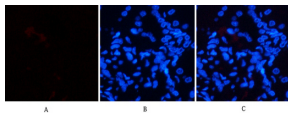
Images



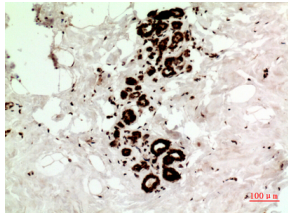
Western Blot analysis of MCF7 cells using HSP70 Polyclonal Antibody. Secondary antibody was diluted at 1:20000



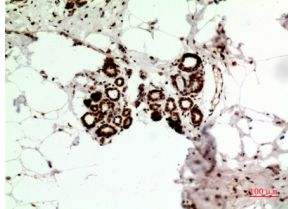
Immunofluorescence analysis of human-kidney tissue. 1, HSP70 Polyclonal Antibody (red) was diluted at 1:200 (4°C, overnight). 2, Cy3 labeled Secondary antibody was diluted at 1:300 (room temperature, 50 min). 3, Picture B: DAPI (blue) 10 min. Picture A: Target. Picture B: DAPI. Picture C: merge of A+B



Immunofluorescence analysis of human-kidney tissue. 1,HSP70 Polyclonal Antibody(red) was diluted at 1:200(4°C,overnight). 2, Cy3 labeled Secondary antibody was diluted at 1:300(room temperature, 50min),3, Picture B: DAPI(blue) 10min. Picture A:Target. Picture B: DAPI. Picture C: merge of A+B



Immunohistochemical analysis of paraffin-embedded human-Breast-cancer, antibody was diluted at 1:100



Immunohistochemical analysis of paraffin-embedded human-Breast-cancer, antibody was diluted at 1:100

Storage

-20°C for one year

501 Changsheng S Rd, Nanhu Dist, Jiaxing, Zhejiang, China

Tel: 86 21 31007137 | E-mail: save@bt-laboratory.com | www.bt-laboratory.com