

## HSP90Beta Polyclonal Antibody

### Description

<b>Product type</b>	Primary Antibody
<b>Code</b>	BT-AP04270
<b>Host</b>	Rabbit
<b>Isotype</b>	IgG
<b>Size</b>	20ul, 50ul, 100ul
<b>Immunogen</b>	The antiserum was produced against synthesized peptide derived from human HSP90B. AA range:226-275
<b>Mol wt</b>	83133
<b>Species reactivity</b>	Human, Mouse, Rat, Monkey
<b>Clonality</b>	Polyclonal
<b>Recommended application</b>	WB, IHC-p, IP, IF, ELISA
<b>Concentration</b>	1 mg/ml
<b>Full name</b>	HSP90beta Antibody
<b>Synonyms</b>	HSP90AB1; HSP90B; HSPC2; HSPCB; Heat shock protein HSP 90-beta; HSP 90; Heat shock 84 kDa; HSP 84; HSP84

This product is for research use only, not for use in human, therapeutic or diagnostic procedure.

### Background

HSP90AB1 encodes a member of the heat shock protein 90 family; these proteins are involved in signal transduction, protein folding and degradation and morphological evolution. HSP90AB1 encodes the constitutive form of the cytosolic 90 kDa heat-shock protein and is thought to play a role in gastric apoptosis and inflammation. Alternative splicing results in multiple transcript variants. Pseudogenes have been identified on multiple chromosomes.

### Recommended Dilution

WB: 1: 500 - 1: 2000

IHC: 1: 100 - 1: 300

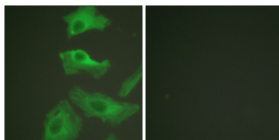
IP: 2 - 5 ug: mg lysate

IF: 1: 200 - 1: 1000

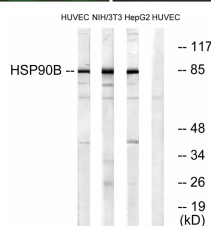
ELISA: 1: 40000

Not yet tested in other applications.

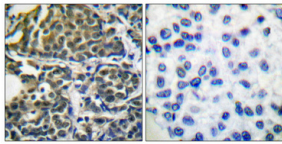
### Images



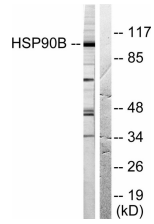
Immunofluorescence analysis of HeLa cells, using HSP90B Antibody. The picture on the right is blocked with the synthesized peptide.



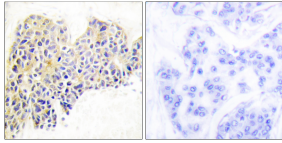
Western blot analysis of lysates from HUVEC/NIH/3T3/HepG2, using HSP90B Antibody. The lane on the right is blocked with the synthesized peptide.



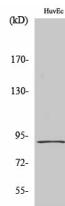
Immunohistochemical analysis of paraffin-embedded Human breast cancer. Antibody was diluted at 1:100(4° overnight). High-pressure and temperature Tris-EDTA,pH8.0 was used for antigen retrieval. Negative control (right) obtained from antibody was pre-absorbed by immunogen peptide.



Western blot analysis of HSP90B Antibody. The lane on the right is blocked with the HSP90B peptide.



Immunohistochemistry analysis of paraffin-embedded human breast carcinoma tissue, using HSP90B Antibody. The picture on the right is blocked with the synthesized peptide.



Western Blot analysis of various cells using HSP90 $\beta$  Polyclonal Antibody diluted at 1:2000

### Storage

-20°C for one year

501 Changsheng S Rd, Nanhu Dist, Jiaxing, Zhejiang, China

Tel: 86 21 31007137 | E-mail: [save@bt-laboratory.com](mailto:save@bt-laboratory.com) | [www.bt-laboratory.com](http://www.bt-laboratory.com)