

## PRI2 Rabbit Polyclonal Antibody

### Description

<b>Product type</b>	Primary Antibody
<b>Code</b>	BT-AP04277
<b>Host</b>	Rabbit
<b>Isotype</b>	IgG
<b>Size</b>	20ul, 50ul, 100ul
<b>Immunogen</b>	Synthesized peptide derived from human PRI2
<b>Mol wt</b>	55990
<b>Species reactivity</b>	Human, Mouse, Rat
<b>Clonality</b>	Polyclonal
<b>Recommended application</b>	WB
<b>Concentration</b>	1 mg/ml
<b>Full name</b>	PRI2
<b>Synonyms</b>	PRI2

This product is for research use only, not for use in human, therapeutic or diagnostic procedure.

### Background

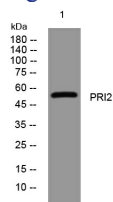
This gene encodes the 58 kilodalton subunit of DNA primase| an enzyme that plays a key role in the replication of DNA. The encoded protein forms a heterodimer with a 49 kilodalton subunit. This heterodimer functions as a DNA-directed RNA polymerase to synthesize small RNA primers that are used to create Okazaki fragments on the lagging strand of the DNA. Alternative splicing of this gene results in multiple transcript variants. This gene has a related pseudogene| which is also present on chromosome 6.

### Recommended Dilution

WB: 1: 500 - 1: 2000

Not yet tested in other applications.

### Images



Western blot analysis of lysates from THP-1 cells, primary antibody was diluted at 1:1000, 4°C overnight

### Storage

-20°C for 1 year