

HtrA2 Polyclonal Antibody

Description

Product type	Primary Antibody
Code	BT-AP04278
Host	Rabbit
Isotype	IgG
Size	20ul, 50ul, 100ul
Immunogen	The antiserum was produced against synthesized peptide derived from human HtrA2. AA range:181-230
Mol wt	48841
Species reactivity	Human, Mouse, Rat
Clonality	Polyclonal
Recommended application	IHC-p, ELISA
Concentration	1 mg/ml
Full name	HtrA2 Antibody
Synonyms	HTRA2; OMI; PRSS25; Serine protease HTRA2; mitochondrial; High temperature requirement protein A2; HtrA2; Omi stress-regulated endoprotease; Serine protease 25; Serine proteinase OMI

This product is for research use only, not for use in human, therapeutic or diagnostic procedure.

Background

HTRA2 encodes a serine protease. The HtrA serine peptidase 2 has been localized in the endoplasmic reticulum and interacts with an alternatively spliced form of mitogen-activated protein kinase 14. The protein has also been localized to the mitochondria with release to the cytosol following apoptotic stimulus. The protein is thought to induce apoptosis by binding the apoptosis inhibitory protein baculoviral IAP repeat-containing 4. Nuclear localization of this protein has also been observed. Alternate splicing of this gene results in multiple transcript variants encoding different isoforms.

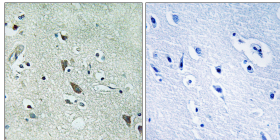
Recommended Dilution

IHC: 1: 100 - 1: 300

ELISA: 1: 40000

Not yet tested in other applications.

Images



Immunohistochemistry analysis of paraffin-embedded human brain tissue, using HtrA2 Antibody. The picture on the right is blocked with the synthesized peptide.

Storage

-20°C for one year