

PRPC Rabbit Polyclonal Antibody

Description

Product type	Primary Antibody
Code	BT-AP04285
Host	Rabbit
Isotype	IgG
Size	20ul, 50ul, 100ul
Immunogen	Synthesized peptide derived from human PRPC
Mol wt	18260
Species reactivity	Human, Rat, Mouse
Clonality	Polyclonal
Recommended application	WB
Concentration	1 mg/ml
Full name	PRPC
Synonyms	PRPC

This product is for research use only, not for use in human, therapeutic or diagnostic procedure.

Background

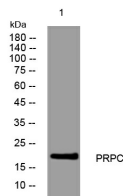
This gene encodes a member of the heterogeneous family of proline-rich salivary glycoproteins. The encoded preproprotein undergoes proteolytic processing to generate one or more mature isoforms before secretion from the parotid and submandibular/sublingual glands. Multiple distinct alleles of this locus including the parotid isoelectric-focusing variant slow (PIF-s)| the parotid acidic protein (Pa) and the double band slow (Db-s) isoforms have been characterized. The reference genome encodes the Db-s allele. Certain alleles of this gene are associated with susceptibility to dental caries. This gene is located in a cluster of closely related salivary proline-rich proteins on chromosome 12. Co-transcription of this gene with adjacent genes has been observed. Alternate splicing of this gene results in multiple transcript variants encoding different isoforms.

Recommended Dilution

WB: 1: 500 - 1: 2000

Not yet tested in other applications.

Images



Western blot analysis of lysates from 293T cells, primary antibody was diluted at 1:1000, 4°C overnight

Storage

-20°C for 1 year