

PRR12 Rabbit Polyclonal Antibody

Description

Product type	Primary Antibody
Code	BT-AP04287
Host	Rabbit
Isotype	IgG
Size	20ul, 50ul, 100ul
Immunogen	Synthesized peptide derived from human PRR12
Mol wt	133650
Species reactivity	Human, Rat, Mouse
Clonality	Polyclonal
Recommended application	WB
Concentration	1 mg/ml
Full name	PRR12
Synonyms	PRR12

This product is for research use only, not for use in human, therapeutic or diagnostic procedure.

Background

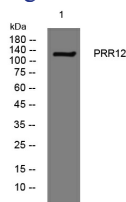
This gene encodes a proline-rich protein that contains two A-T hook DNA binding domains. A chromosomal translocation and gene fusion between this gene and zinc finger| MIZ-type containing 1 (Gene ID: 57178) may underlie intellectual disability and neuropsychiatric problems in a human patient. Enriched expression of this gene in embryonic mouse brain suggests that this gene may play a role in nervous system development.

Recommended Dilution

WB: 1: 500 - 1: 2000

Not yet tested in other applications.

Images



Western blot analysis of lysates from K562 cells, primary antibody was diluted at 1:1000, 4°C overnight

Storage

-20°C for 1 year