

HXX I Polyclonal Antibody

Description

Product type	Primary Antibody
Code	BT-AP04305
Host	Rabbit
Isotype	IgG
Size	20ul, 50ul, 100ul
Immunogen	The antiserum was produced against synthesized peptide derived from human HXX1. AA range:31-80
Mol wt	102486
Species reactivity	Human, Mouse, Rat
Clonality	Polyclonal
Recommended application	WB, IHC-p, IF, ELISA
Concentration	1 mg/ml
Full name	HXX I Antibody
Synonyms	HK1; Hexokinase-1; Brain form hexokinase; Hexokinase type I; HK I

This product is for research use only, not for use in human, therapeutic or diagnostic procedure.

Background

Hexokinases phosphorylate glucose to produce glucose-6-phosphate, the first step in most glucose metabolism pathways. HK1 encodes a ubiquitous form of hexokinase which localizes to the outer membrane of mitochondria. Mutations in HK1 have been associated with hemolytic anemia due to hexokinase deficiency. Alternative splicing of this gene results in several transcript variants which encode different isoforms, some of which are tissue-specific.

Recommended Dilution

WB: 1: 500 - 1: 2000

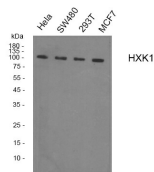
IHC: 1: 100 - 1: 300

IF: 1: 200 - 1: 1000

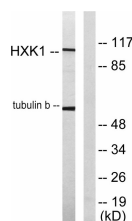
ELISA: 1: 20000

Not yet tested in other applications.

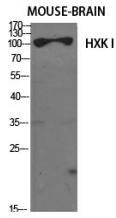
Images



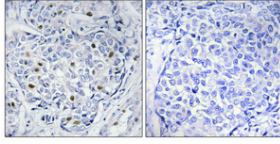
Western blot analysis of HXX I Polyclonal Antibody, using HeLa, MCF7, SW480, 293T cell, 4° over night, secondary antibody (cat: RS0002) was diluted at 1:10000, 37° 1hour.



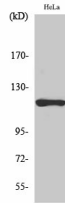
Western blot analysis of lysates from HeLa cells, using HXX1 Antibody. The lane on the right is blocked with the synthesized peptide.



Western Blot analysis of various cells using HXK I Polyclonal Antibody diluted at 1:1000



Immunohistochemical analysis of paraffin-embedded Human breast cancer. Antibody was diluted at 1:100(4° overnight). High-pressure and temperature Tris-EDTA,pH8.0 was used for antigen retrieval. Negative contrl (right) obtaned from antibody was pre-absorbed by immunogen peptide.



Western Blot analysis of HeLa cells using HXK I Polyclonal Antibody diluted at 1:1000

Storage

-20°C for one year

501 Changsheng S Rd, Nanhu Dist, Jiaxing, Zhejiang, China

Tel: 86 21 31007137 | E-mail: save@bt-laboratory.com | www.bt-laboratory.com