

PSB3 Rabbit Polyclonal Antibody

Description

Product type	Primary Antibody
Code	BT-AP04308
Host	Rabbit
Isotype	IgG
Size	20ul, 50ul, 100ul
Immunogen	Synthesized peptide derived from human PSB3
Mol wt	22550
Species reactivity	Human, Mouse, Rat
Clonality	Polyclonal
Recommended application	WB
Concentration	1 mg/ml
Full name	PSB3
Synonyms	PSB3

This product is for research use only, not for use in human, therapeutic or diagnostic procedure.

Background

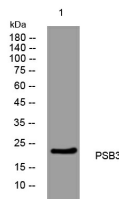
The proteasome is a multicatalytic proteinase complex with a highly ordered ring-shaped 20S core structure. The core structure is composed of 4 rings of 28 non-identical subunits; 2 rings are composed of 7 alpha subunits and 2 rings are composed of 7 beta subunits. Proteasomes are distributed throughout eukaryotic cells at a high concentration and cleave peptides in an ATP/ubiquitin-dependent process in a non-lysosomal pathway. An essential function of a modified proteasome| the immunoproteasome| is the processing of class I MHC peptides. This gene encodes a member of the proteasome B-type family| also known as the T1B family| that is a 20S core beta subunit. The 26 S proteasome may be involved in trinucleotide repeat expansion| a phenomenon which is associated with many hereditary neurological diseases. Pseudogenes have been identified on chromosomes 2 and 12. Alternative splicing results in multiple transcript variants

Recommended Dilution

WB: 1: 500 - 1: 2000

Not yet tested in other applications.

Images



Western blot analysis of lysates from KB cells, primary antibody was diluted at 1:1000, 4°C overnight

Storage

-20°C for 1 year