

ICAM-1 Polyclonal Antibody

Description

Product type	Primary Antibody
Code	BT-AP04322
Host	Rabbit
Isotype	IgG
Size	20ul, 50ul, 100ul
Immunogen	The antiserum was produced against synthesized peptide derived from human ICAM-1. AA range:479-528
Mol wt	57825
Species reactivity	Human
Clonality	Polyclonal
Recommended application	WB, IHC-p, ELISA
Concentration	1 mg/ml
Full name	ICAM-1 Antibody
Synonyms	ICAM1; Intercellular adhesion molecule 1; ICAM-1; Major group rhinovirus receptor; CD antigen CD54

This product is for research use only, not for use in human, therapeutic or diagnostic procedure.

Background

ICAM1 encodes a cell surface glycoprotein which is typically expressed on endothelial cells and cells of the immune system. It binds to integrins of type CD11a / CD18, or CD11b / CD18 and is also exploited by Rhinovirus as a receptor.

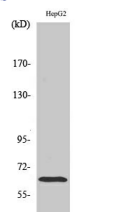
Recommended Dilution

WB: 1: 500 - 1: 2000

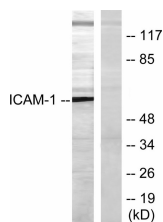
ELISA: 1: 10000

Not yet tested in other applications.

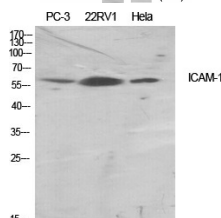
Images



Western Blot analysis of HepG2 cells using ICAM-1 Polyclonal Antibody diluted at 1:500



Western blot analysis of lysates from HepG2 cells, using ICAM-1 Antibody. The lane on the right is blocked with the synthesized peptide.



Western Blot analysis of various cells using ICAM-1 Polyclonal Antibody diluted at 1:500

Storage

-20°C for one year

501 Changsheng S Rd, Nanhu Dist, Jiaxing, Zhejiang, China

Tel: 86 21 31007137 | E-mail: save@bt-laboratory.com | www.bt-laboratory.com