

ICAM-2 Polyclonal Antibody

Description

Product type	Primary Antibody
Code	BT-AP04324
Host	Rabbit
Isotype	IgG
Size	20ul, 50ul, 100ul
Immunogen	The antiserum was produced against synthesized peptide derived from human ICAM2. AA range:151-200
Mol wt	57825
Species reactivity	Human
Clonality	Polyclonal
Recommended application	WB, ELISA
Concentration	1 mg/ml
Full name	ICAM-2 Antibody
Synonyms	ICAM2; Intercellular adhesion molecule 2; ICAM-2; CD antigen CD102

This product is for research use only, not for use in human, therapeutic or diagnostic procedure.

Background

ICAM1 encodes a cell surface glycoprotein which is typically expressed on endothelial cells and cells of the immune system. It binds to integrins of type CD11a / CD18, or CD11b / CD18 and is also exploited by Rhinovirus as a receptor.

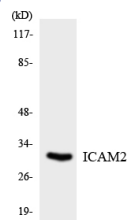
Recommended Dilution

WB: 1: 500 - 1: 2000

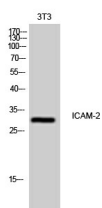
ELISA: 1: 10000

Not yet tested in other applications.

Images



Western blot analysis of the lysates from HT-29 cells using ICAM2 antibody.



Western Blot analysis of 3T3 cells using ICAM-2 Polyclonal Antibody

Storage

-20°C for one year