

## ICOS Polyclonal Antibody

### Description

<b>Product type</b>	Primary Antibody
<b>Code</b>	BT-AP04327
<b>Host</b>	Rabbit
<b>Isotype</b>	IgG
<b>Size</b>	20ul, 50ul, 100ul
<b>Immunogen</b>	The antiserum was produced against synthesized peptide derived from the Internal region of human ICOS. AA range:31-80
<b>Mol wt</b>	22625
<b>Species reactivity</b>	Human, Mouse, Rat
<b>Clonality</b>	Polyclonal
<b>Recommended application</b>	WB, IHC-p, ELISA
<b>Concentration</b>	1 mg/ml
<b>Full name</b>	ICOS Antibody
<b>Synonyms</b>	ICOS; AILIM; Inducible T-cell costimulator; Activation-inducible lymphocyte immunomediatory molecule; CD278

**This product is for research use only, not for use in human, therapeutic or diagnostic procedure.**

### Background

The protein encoded by ICOS (inducible T-cell costimulator) belongs to the CD28 and CTLA-4 cell-surface receptor family. It forms homodimers and plays an important role in cell-cell signaling, immune responses, and regulation of cell proliferation.

### Recommended Dilution

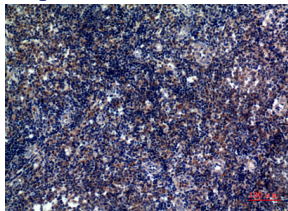
WB: 1: 500 - 1: 2000

IHC-p: 1: 100 - 1: 300

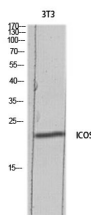
ELISA: 1: 10000

Not yet tested in other applications.

### Images



Immunohistochemical analysis of paraffin-embedded human-tonsils, antibody was diluted at 1:100



Western blot analysis of 3T3 lysis using ICOS antibody. Antibody was diluted at 1:500. Secondary antibody was diluted at 1:20000

## Storage

-20°C for one year

501 Changsheng S Rd, Nanhu Dist, Jiaxing, Zhejiang, China

Tel: 86 21 31007137 | E-mail: [save@bt-laboratory.com](mailto:save@bt-laboratory.com) | [www.bt-laboratory.com](http://www.bt-laboratory.com)